

# STUDENT ESSENTIALS SUPPORT GUIDE

A CCSF guide to help meet students' basic needs by connecting with resources and services.

2022-2023



CITY COLLEGE OF SAN FRANCISCO

*We must realize that when basic needs have been met, human development is primarily about being more, not having more ~Dalai Lama XIV*

Welcome to the CCSF Student Essentials Support Guide for students. This guide will provide you with a list of resources and support services that can assist you throughout your time at City College of San Francisco. Whether you are a new student or a returning student, in this guide you will find the basic needs supports available to ensure you are supported and successful during your educational journey.

[CCSF Student Services/Resources List](#)  
[Virtual Counter Schedule](#)

Questions?

Email: [sparkpoint@ccsf.edu](mailto:sparkpoint@ccsf.edu)

Visit: [CCSF Basic Needs / SparkPoint](#)

## BASIC NEEDS



### Food

[Rams Food Market and Food Shelves](#)  
[SF/Marin Food Bank - Food Finder](#)  
[CalFresh Benefits](#)



### Housing Referrals

[Homeless At-Risk Transitional Students \(HARTS\) Program](#)  
On-campus shower access  
Limited hygiene supplies  
County Homelessness Response System  
[2-1-1 Bay Area: Housing](#)



### Wellness

[Student Health Center](#)  
Medical/Nursing Services;  
Mental Health Services;  
Family Pact & Workshops/Groups  
[SF Human Service Agency](#)  
[Medical/Food/Cash Assistance](#)  
[2-1-1 Bay Area](#)

# BASIC NEEDS

## Student Parent Resources

Family Resource Center

Referrals to Student-Parent Resources

Lactation Room



CalWORKs

EOPS/CARE

Compass Family Services

Wu Yee Children's Services Children's

Council SF

Moms Against Poverty

Women, Infant, Children (WIC) - [NAHC]

## Transportation

Guardian Scholars Program-

Homeless At-Risk Transitional Students

Program (HARTS)-

Extended Opportunity Programs and Services

(EOPS)-

SFMTA - [SFMTA.com/fares](https://www.sfmta.com/fares)

[SFMTA.com/paratransit](https://www.sfmta.com/paratransit)

Free Muni for all Youth-

Referrals to reduced transit fares and parking  
citation payment options-



## Academic Support

Textbook Resources

Associated Students Bookloan Program

Library Course Reserves/Rentals

Open Education Resources (OER)

Guardian Scholars Program

City Dream Center

Extended Opportunity Programs and  
Services (EOPS)

Multicultural Retention Services



## Technology Loan Program

Rosenberg Library

Laptop and Chromebook Devices

Wifi Hotspot

Calculators

## Bilingual Counseling Services

Academic Counseling Services

Multicultural Retention Services

Disabled Students Programs & Services  
(DSPS)

Extended Opportunity Programs and  
Services (EOPS)



## Tutoring Services

Student Equity Tutorial Coordinator - Dawn

Mokuau; [mokuau@ccsf.edu](mailto:mokuau@ccsf.edu); (415) 452-5221

Student Tutoring and Resource (STAR)

Center; [www.ccsf.edu/lac/tutoring](http://www.ccsf.edu/lac/tutoring)

Math Lab

English Lab

ESL Center for Language and Academic

Development (CLAD) Lab

Biology Resource Center

DSPS Academic Assistance Program

Communication Lab

Computer Science Tutor Squad

Multi-Cultural Retention Center (MRSD)

Tutoring

Metro Transfer Program

Project Shine

Puente Program

Writing Success Project

Working Adult Degree Program

NetTutor - Online



# Employment & Education



## Career Services

### Career Services



- We offer workshops (resumes, LinkedIn, etc.), one-on-one coaching, industry research/exploration, career panels, worksite tours, networking events, career fairs, informational interviews, mock interviews, job/internship placement. Everything you need to help you land your next job.

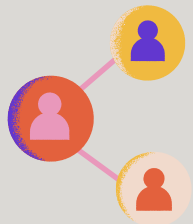
### Office of Student Employment

- If you need help paying for college or just want to work part-time on campus the Office of Student Employment has paid job opportunities with CCSF departments. Find a job in your academic area or just find something that works with your schedule.



### Handshake

- Handshake is CCSF's employer engagement platform where you can network with employers and other students, explore the companies in your industry, and check out jobs and internships they post specifically for college students.



### Work Experience

- Work Experience courses help you earn credit for working or interning.

### JobsNOW! For Job Seekers

- Matches people looking for jobs with open positions.

## Career Development Center

### Career Counseling Services

- Counseling undecided students about educational majors or career paths
- Preparation for job or internship planning
- Resume and Interviewing counseling
- Job or Internship Search Assistance
- Career Exploration Online

## Center for Entrepreneurship & Innovation



- Provides access to critical resources and to network with the entrepreneurial community in San Francisco and the Bay Area.

## Financial Services



### Financial Support

#### Financial Aid Office

- FAFSA or CA Dream Act Application
- Debt Counseling
- Financial Literacy Resources

Student Emergency Fund Application (SEFA):  
One-time emergency funding (up to \$500).

#### Scholarship Office

Full-time Incentive Grant (FTIG):  
\$500 (may be eligible up to four terms.  
Grant availability based on AB19 funding).



## Legal Consultation

### City Dream Center

- Immigration Legal Services
- Referrals to legal support services



# CCSF RESOURCE CONTACTS

## BASIC NEEDS

### Food

Student Activities - [ccsflife@mail.ccsf.edu](mailto:ccsflife@mail.ccsf.edu)  
SparkPoint CCSF, Basic Needs Center - Alicia Fausto;  
[sparkpoint@ccsf.edu](mailto:sparkpoint@ccsf.edu)

### Housing Referrals

HARTS Program - Elaine Bautista;  
[evbautista@ccsf.edu](mailto:evbautista@ccsf.edu)

### Wellness

Student Health Services - George Martiniano Jr.;  
[gmartiniano@ccsf.edu](mailto:gmartiniano@ccsf.edu)

### Student Parent Resources

Family Resource Center - Tracey Faulkner;  
[tfaulkne@ccsf.edu](mailto:tfaulkne@ccsf.edu)  
CalWorks - Markeda Grey; [calworks@ccsf.edu](mailto:calworks@ccsf.edu)  
EOPS - Karen Gibson; [eops@ccsf.edu](mailto:eops@ccsf.edu)  
WIC - Alicia Fausto; [sparkpoint@ccsf.edu](mailto:sparkpoint@ccsf.edu)

### Transportation

GS/HARTS - Elaine Bautista; [evbautista@ccsf.edu](mailto:evbautista@ccsf.edu)  
EOPS - Karen Gibson; [eops@ccsf.edu](mailto:eops@ccsf.edu)  
SFMTA - [www.SFMTA.com/fares](http://www.SFMTA.com/fares);  
[www.SFMTA.com/paratransit](http://www.SFMTA.com/paratransit)  
Clipper Pass Program - [www.clipperstartcard.com](http://www.clipperstartcard.com)

### Academic Support: Textbook Resources

Associated Students - [ccsflife@mail.ccsf.edu](mailto:ccsflife@mail.ccsf.edu)  
Library Reserves - Angela Webster;  
[awebster@ccsf.edu](mailto:awebster@ccsf.edu)  
Guardian Scholars Program - Elaine Bautista;  
[evbautista@ccsf.edu](mailto:evbautista@ccsf.edu)  
City Dream Center - Jacqueline Yanez Martinez;  
[jyanez@ccsf.edu](mailto:jyanez@ccsf.edu)  
EOPS - Karen Gibson; [eops@ccsf.edu](mailto:eops@ccsf.edu)

Technology Loan Program [library@ccsf.edu](mailto:library@ccsf.edu)

### Bilingual Counseling Services

Academic Counseling - [academiccounseling@ccsf.edu](mailto:academiccounseling@ccsf.edu)  
DSPS Counseling - [dspsacom@ccsf.edu](mailto:dspsacom@ccsf.edu); (415) 452-5481  
(currently voicemail only)  
EOPS Counseling - [eops@ccsf.edu](mailto:eops@ccsf.edu); (415) 239-3562  
Multicultural Retention Services -  
[academiccounseling@ccsf.edu](mailto:academiccounseling@ccsf.edu)

### Tutoring

Student Equity Tutorial Coordinator: Dawn Mokuau;  
[mokuau@ccsf.edu](mailto:mokuau@ccsf.edu); (415) 452-5221

## EMPLOYMENT & EDUCATION

**Career Services** - [careerservices@ccsf.edu](mailto:careerservices@ccsf.edu); (415)  
452-7045

**Office of Student Employment** -  
[Studentemployment@ccsf.edu](mailto:Studentemployment@ccsf.edu); Google Voice  
415-506-8682

**Career Development Center** - [careercenter@ccsf.edu](mailto:careercenter@ccsf.edu);  
(415) 239-3117

**Center for Entrepreneurship and Innovation** - Leo  
Bello; [lbello@ccsf.edu](mailto:lbello@ccsf.edu)

## FINANCIAL SERVICES

**Financial Aid Office** - [finaid@ccsf.edu](mailto:finaid@ccsf.edu)  
Student Emergency Fund Application - Lisa Morton;  
[lmorton@ccsf.edu](mailto:lmorton@ccsf.edu)

**Scholarship Office** - [scholarships@ccsf.edu](mailto:scholarships@ccsf.edu)  
Full-Time Incentive Grant- [ftig@ccsf.edu](mailto:ftig@ccsf.edu)

### Legal Consultation

City Dream Center - Jacqueline Yanez Martinez;  
[jyanez@ccsf.edu](mailto:jyanez@ccsf.edu)