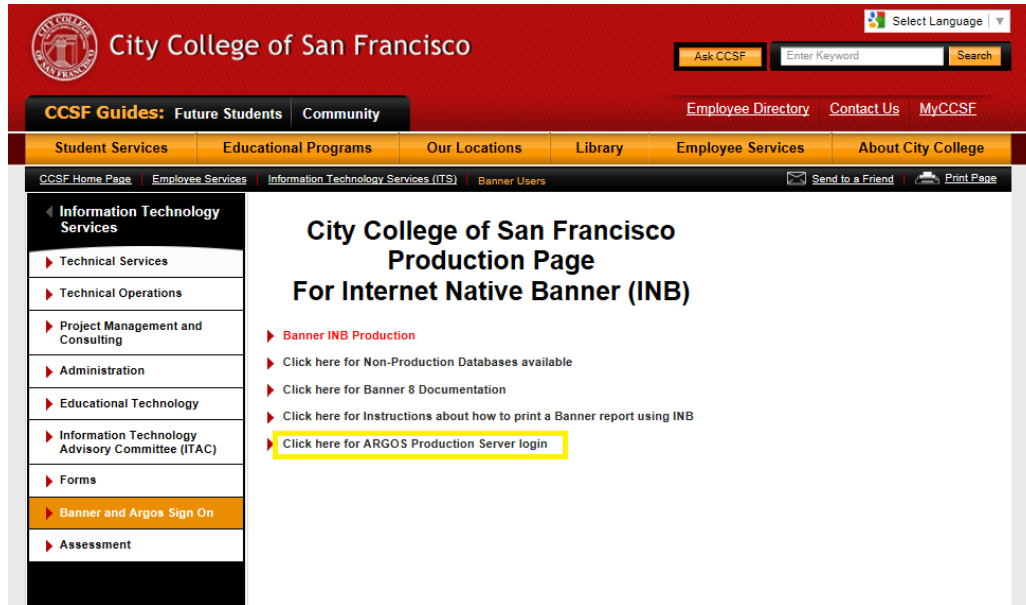


How to Access Argos Cubes

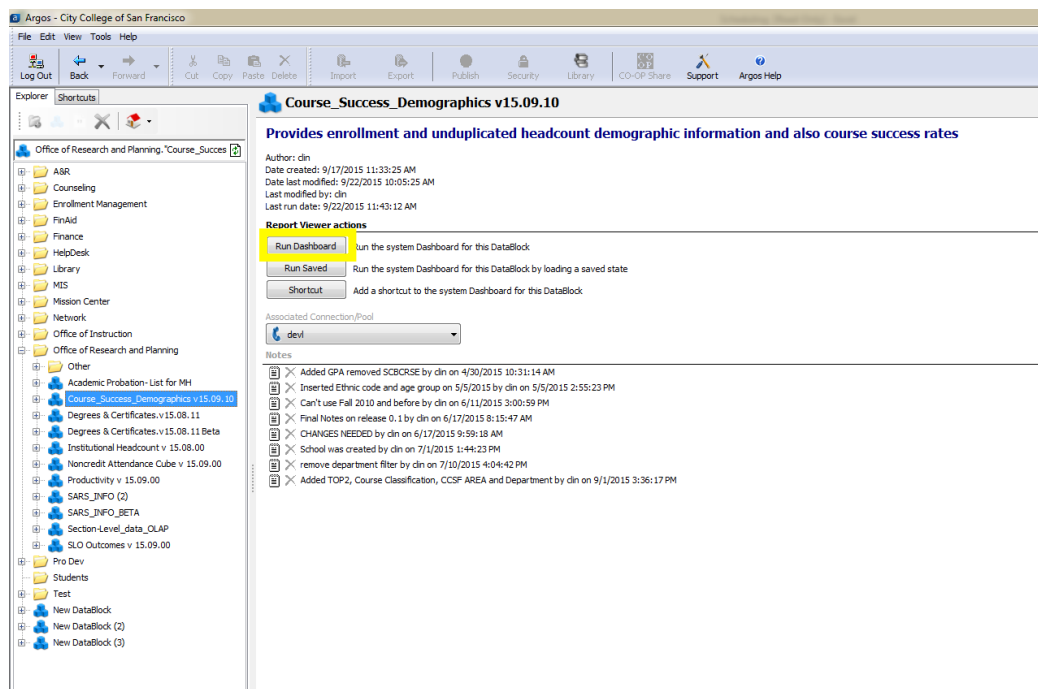
1. Access Argos from www.ccsf.edu/banner

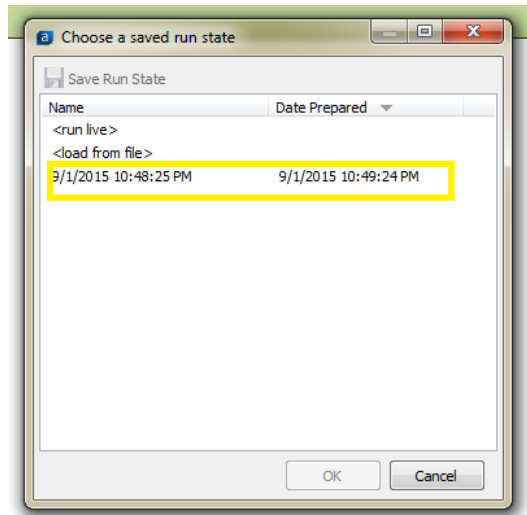
Note: We recommend using internet browsers other than Google Chrome



If you receive a Java message, make sure to click on 'Run' or 'Allow this time'

2. Log in using your CCSF network credentials
3. Look into the folder of Office of Research and Planning and select an Argos cube
4. To open an Argos cube click on "Run Dashboard" and click on the latest "Save Run State"





Note: Loading the latest “Save Run State” can save time

5. Your Argos cube should open shortly

Course_Success_Demographics v15.08.10 Dashboard

Dashboard Options: *Saved Settings* Report Options: *Choose a Report*

Data Table Controls Description

Course_Success_Demographics v15.08.10
Office of Research and Planning
Modified on: 9/2/2015 10:44:23 AM

Available Dimensions: Term, Age Group, Gender, Campus, Subject, Course Number, School, Course Title, Veteran, Foster Youth, First_Generated, TOP2_Classified, Course_Classified, Department, CCSF AREA

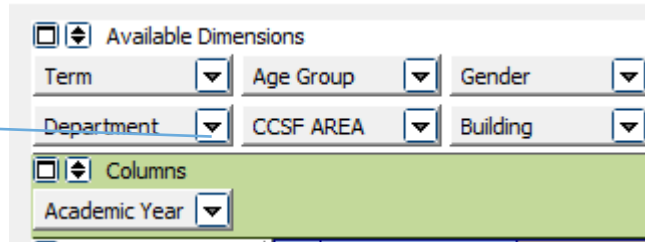
Columns: Academic Year

Ethnicity	Academic Year	2011 - 2012			2012 - 2013			2013 - 2014			2014 - 2015			Total by ROWS		
		SuccessCount	Enrollment Count*	% Course Success*	SuccessCount	Enrollment Count*	% Course Success*	SuccessCount	Enrollment Count*	% Course Success*	SuccessCount	Enrollment Count*	% Course Success*	SuccessCount	Enrollment Count*	% Course Success*
[Null]		3	3	100.00%	1	1	100.00%	0	0	00.00%	0	0	00.00%	3	4	75.00%
African American		11,997	20,662	58.01%	9,794	17,321	56.20%	8,181	14,342	57.04%	6,630	11,620	57.06%	36,542	63,965	57.13%
American Indian/Alaskan Native		369	550	67.09%	317	503	63.02%	233	373	62.47%	201	305	65.90%	1,120	1,731	64.70%
Asian		52,129	66,379	78.53%	46,069	59,260	77.74%	42,225	53,290	79.24%	36,093	45,471	79.38%	176,516	224,400	78.66%
Filipino		9,176	13,231	69.35%	7,745	11,198	69.16%	6,611	9,368	70.57%	5,659	8,061	70.20%	29,191	41,858	69.74%
Latino		29,372	45,013	65.25%	26,988	42,116	64.08%	24,729	37,870	65.30%	21,709	33,519	64.77%	102,788	158,518	64.85%
Pacific Islander		1,127	1,803	62.51%	900	1,444	62.37%	824	1,258	65.58%	699	1,137	61.48%	3,550	5,742	61.83%
Two or more Races		6,119	9,332	65.57%	5,803	8,941	64.90%	5,568	8,257	67.43%	5,004	7,532	66.44%	22,494	34,062	66.04%
Unknown		4,473	6,214	71.98%	3,731	5,175	72.10%	2,973	4,059	73.24%	1,967	2,864	68.68%	13,144	18,312	71.78%
White		35,634	47,742	74.64%	30,820	40,978	75.21%	26,943	35,807	75.25%	22,635	30,230	74.88%	116,032	154,757	74.98%
Total by COLUMNS		150,398	210,949	71.30%	132,108	186,937	70.67%	118,287	164,724	71.81%	100,597	140,739	71.48%	501,390	703,349	71.29%

Measures: SuccessCount, Enrollment Count, % Course Success

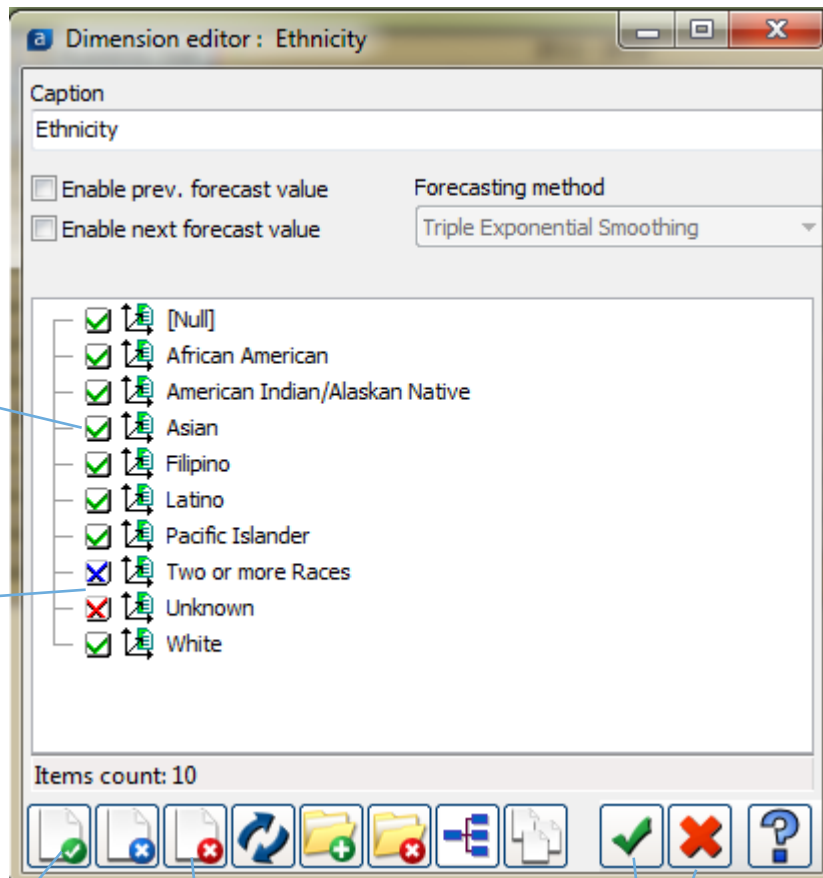
6. You can further filter your data by clicking on the down pointing arrow.

You can explore additional filters by clicking on the down pointing arrow.



Can click or unclick each category to further filter your data.

A blue X means that the selection will remain invisible, while a red X means that the selection will be removed.



Select all

Clear all selection

Accept or cancel your selection