

## Configuring the Multilingual Capacities of Windows XP (Chinese)

You may need to contact the Help Desk staff in order to install these features to your CCSF computer.

1. Go to the *Control Panel*.
2. Choose *Regional and Language Options*.
3. Choose the tab called, *Languages*.
4. Check the box, *Install files for East Asian Languages*.

Fig.1.

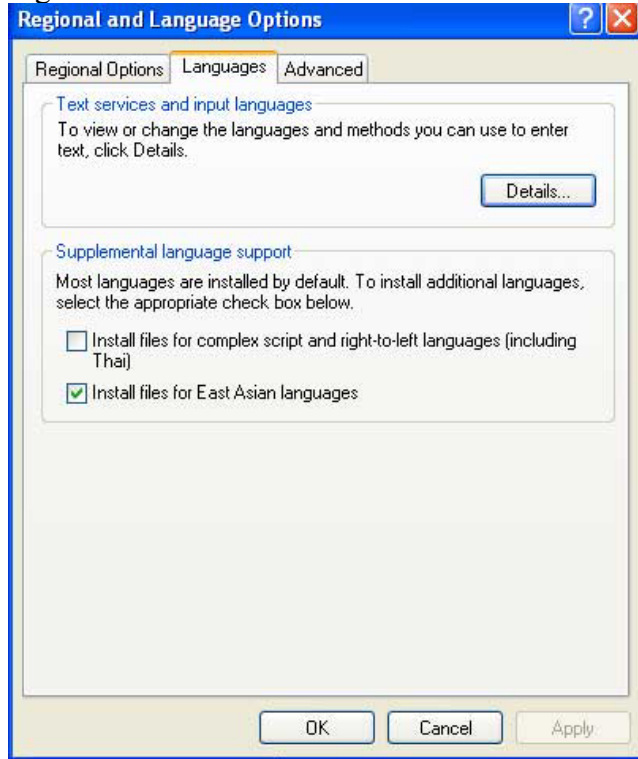


Fig. 2



5. After the files are installed, choose *Details* (Fig.1).
6. Then choose *Add* (Fig.2).
7. Choose *Chinese (PRC)*. (Fig.3) For the keyboard layout choose *Chinese (Simplified) - Microsoft Pinyin IME 3.0*. (Even if you wish to type traditional characters, the Pinyin system will work for input.)

Fig.3.

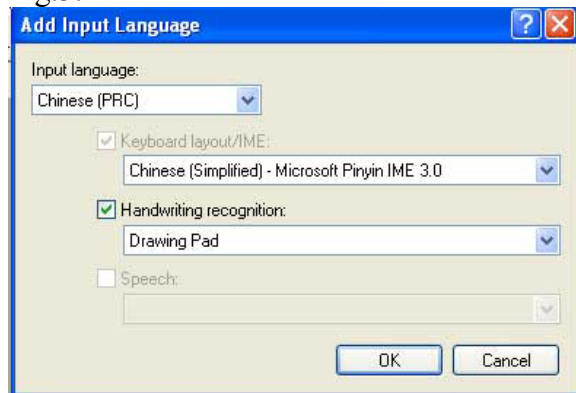


Fig. 4.



8. On Fig. 2, choose *Language Bar*, then make sure the boxes in Fig. 4 are checked. Click *OK*.
9. Follow the instructions on the handout *Typing in Chinese in Windows XP*.