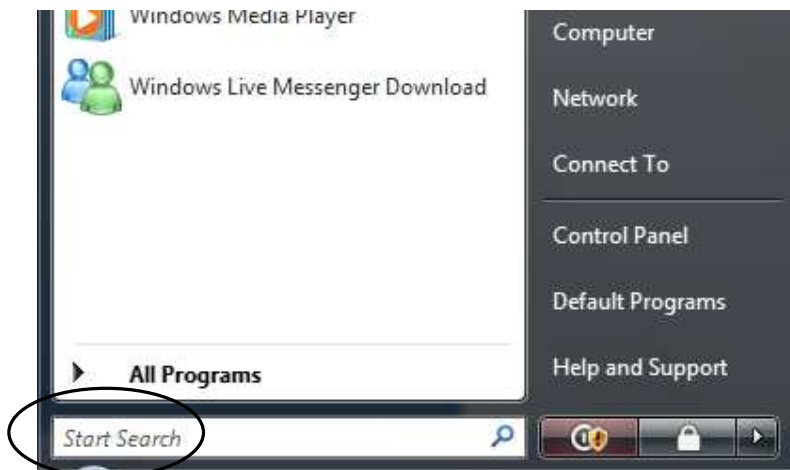


How to Find Your Wireless Card Physical Address: Vista

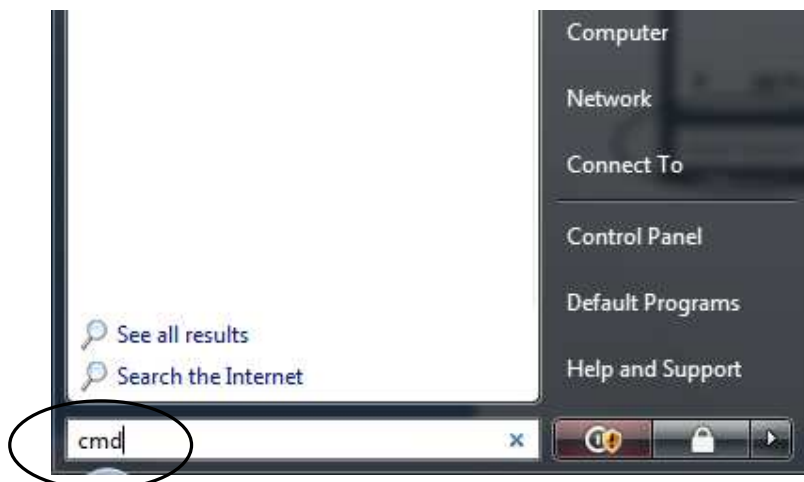
1. A Media Access Control Address (MAC) also known as **physical address**, is composed of 12 Hexadecimal digits usually written 00:0D:56:2C:0A:E8 or 00-0D-56-2C-0A-E8. You can think of it as a serial number.
2. These instructions are for Vista.
 - a. Click on the Start button



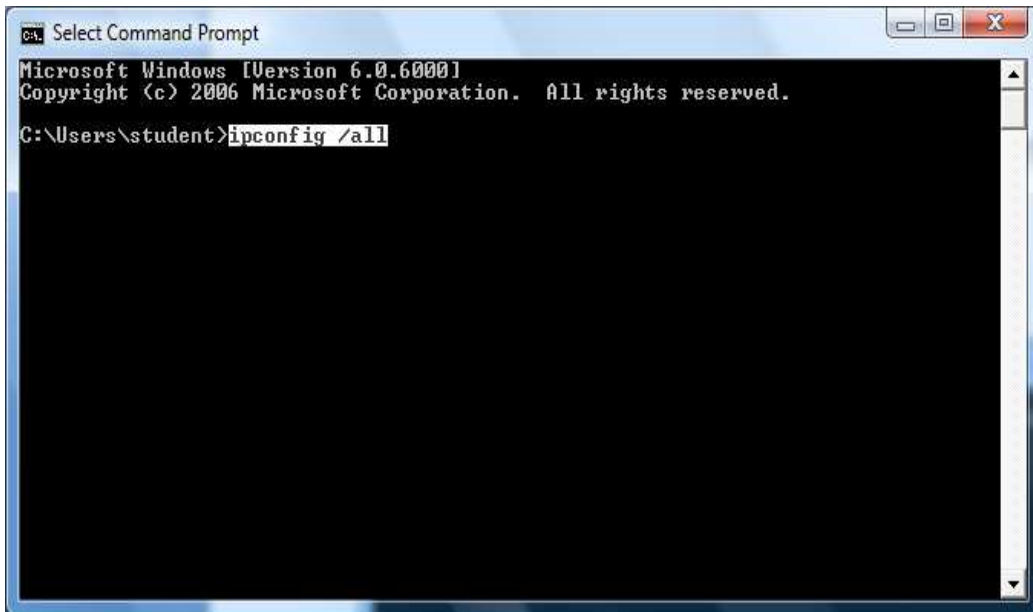
- b. Click on Start Search.



- c. Type "cmd" (without the quotes) and hit Enter.

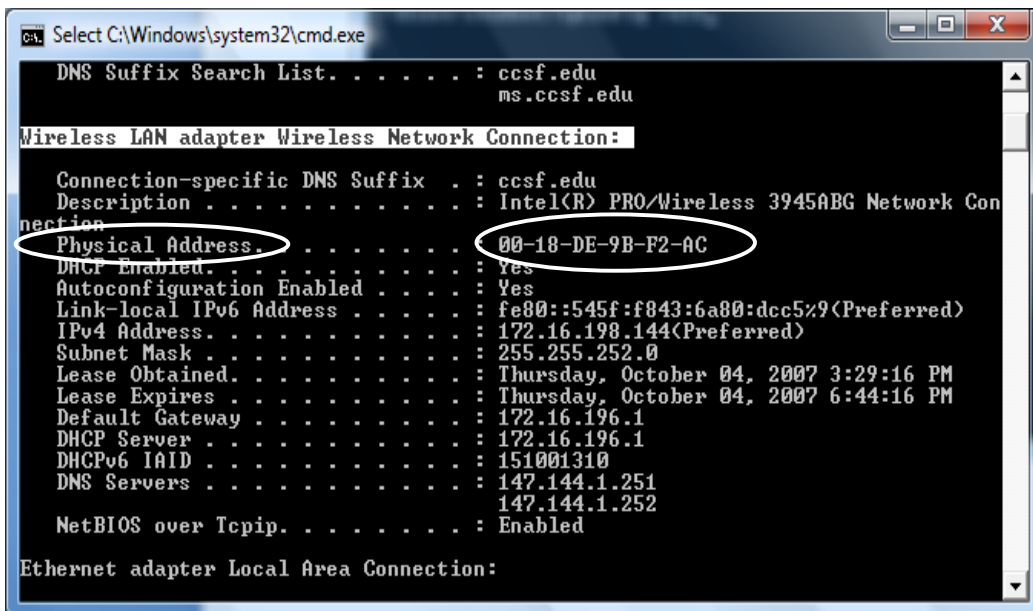


- d. A DOS window will open. Type “**ipconfig /all**” (without the quotes) and then press Enter.



```
ca. Select Command Prompt
Microsoft Windows [Version 6.0.6000]
Copyright (c) 2006 Microsoft Corporation. All rights reserved.
C:\Users\student>ipconfig /all
```

- e. The header is **Wireless LAN adapter Wireless Network Connection**. The physical address starts with 00.



```
ca. Select C:\Windows\system32\cmd.exe
DNS Suffix Search List . . . . . : ccsf.edu
                                ms.ccsf.edu
Wireless LAN adapter Wireless Network Connection:
Connection-specific DNS Suffix . : ccsf.edu
Description . . . . . : Intel(R) PRO/Wireless 3945ABG Network Con
nection
Physical Address. . . . . : 00-18-DE-9B-F2-AC
DHCP Enabled. . . . . : Yes
Autoconfiguration Enabled . . . . . : Yes
Link-local IPv6 Address . . . . . : fe80::545f:f843:6a80:dcc5%9(Preferred)
IPv4 Address. . . . . : 172.16.198.144(Preferred)
Subnet Mask . . . . . : 255.255.252.0
Lease Obtained. . . . . : Thursday, October 04, 2007 3:29:16 PM
Lease Expires . . . . . : Thursday, October 04, 2007 6:44:16 PM
Default Gateway . . . . . : 172.16.196.1
DHCP Server . . . . . : 172.16.196.1
DHCPv6 IAID . . . . . : 151001310
DNS Servers . . . . . : 147.144.1.251
                                147.144.1.252
NetBIOS over Tcpip. . . . . : Enabled
Ethernet adapter Local Area Connection:
```