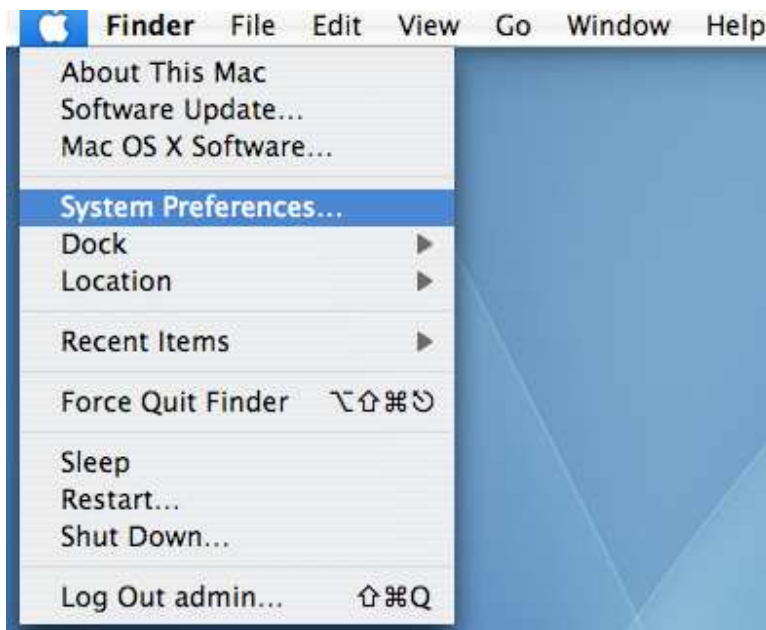


## How to Find Your Airport ID: OS X Leopard

1. A Media Access Control Address is composed of 12 Hexadecimal digits usually written 00:0D:56:2C:0A:E8 or 00-0D-56-2C-0A-E8. You can think of it as a serial number.
2. These instructions are for OS X (10.5.1). Other version may differ.
  - a. Click on the **Apple** Icon and the click on **System preferences**



b. This will open the System preferences window. Click on the **Network** icon.



- c. This will open the Network window. Click on AirPort and then Advanced.



d. The physical address for the wireless card is the **AirPort ID**.

