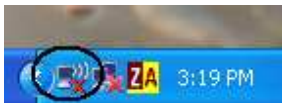


How to Connect Win XP to the Wi-Fi Network

1. These directions are for Win XP Service Pack 2. Other versions of Win XP may differ slightly.
2. This assumes your computer is located where you can get a signal from the CCSF Wi-Fi Network and your wireless card is connected and operational.
3. Bringing your computer in range should produce this information balloon at the bottom right hand corner. Click the message and continue to step 3.



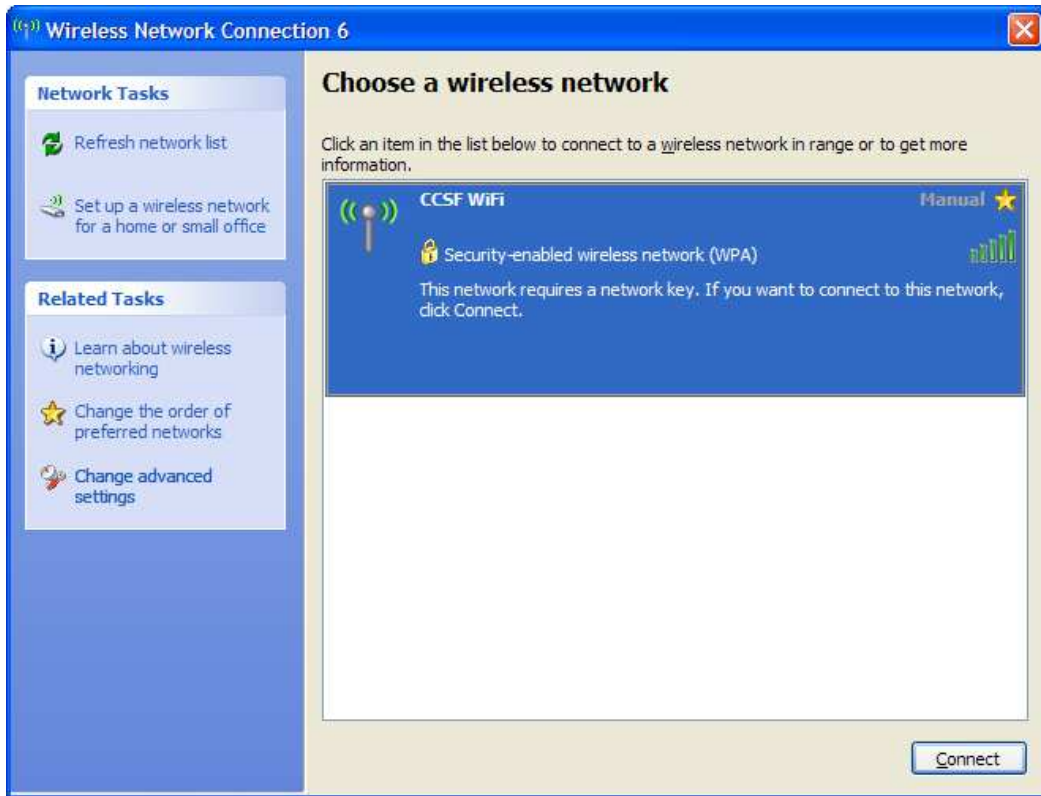
If not, you can right click on the Wireless Network Connection Icon:



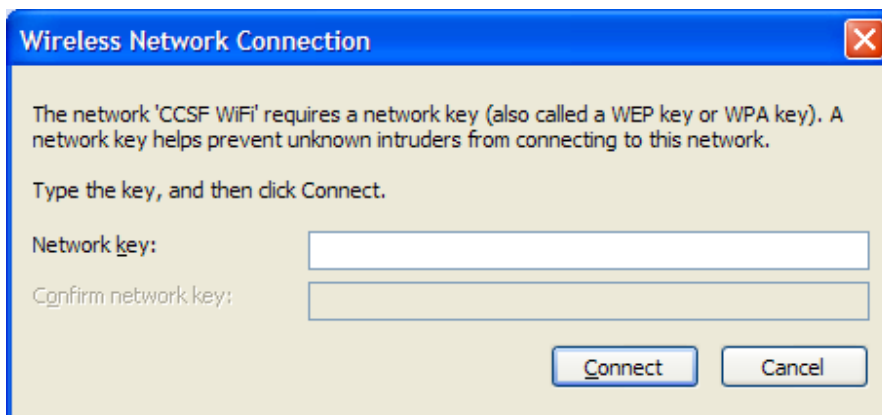
Then click on View Available Wireless Networks



- This will bring up the Wireless Network Connection window. Ensure the CCSF WiFi network is highlighted and then click on the **Connect** button on the bottom right hand corner.



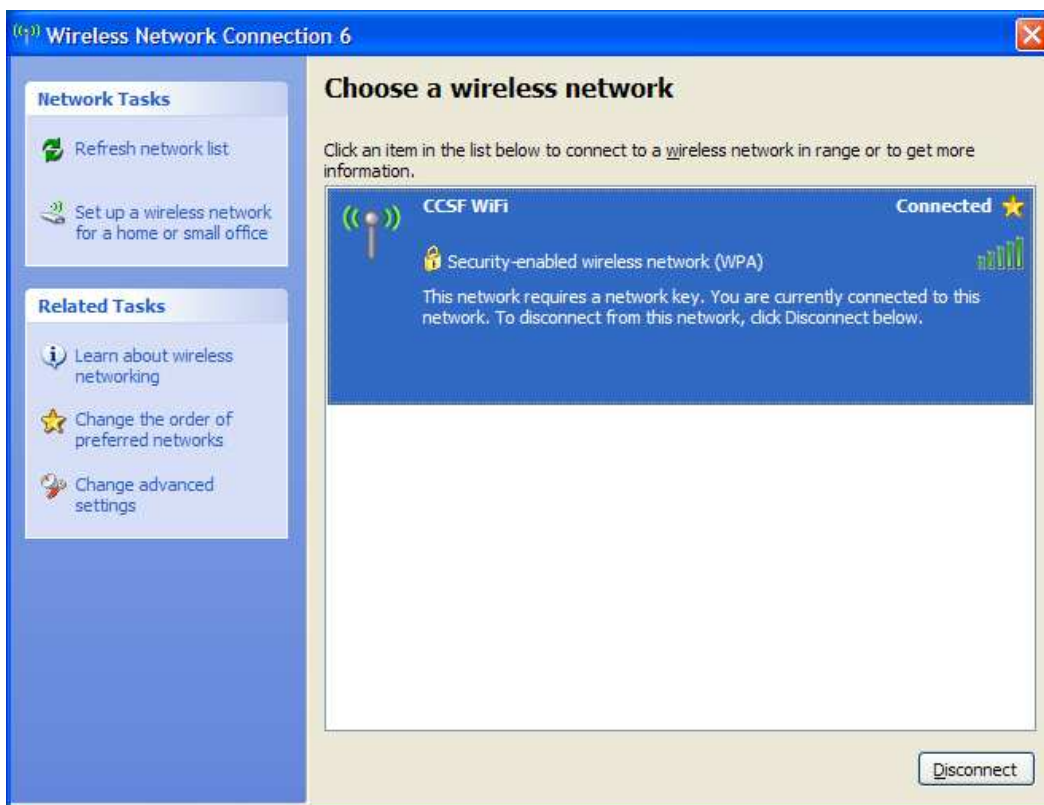
- You'll then be prompted to enter a network key. Type in the WPA key (**freewireless4all**) and click the Connect button.



- You'll get this window while your computer is trying to connect to the CCSF Wi-Fi Network. This may take a few moments.



- You should see the word **Connected** with a star next to it if all goes well.



- You can now close this window (click on the red box with an x in the upper right corner).
- Your Windows XP should now be able to go on to the Internet through the Wi-Fi network.
- If you experience any difficulties, refer to our website (www.ccsf.edu/wifi) troubleshooting or FAQ sections; send an e-mail (wlan@ccsf.edu) detailing your problems; or visit the Wi-Fi Help Desk (see our website for details).