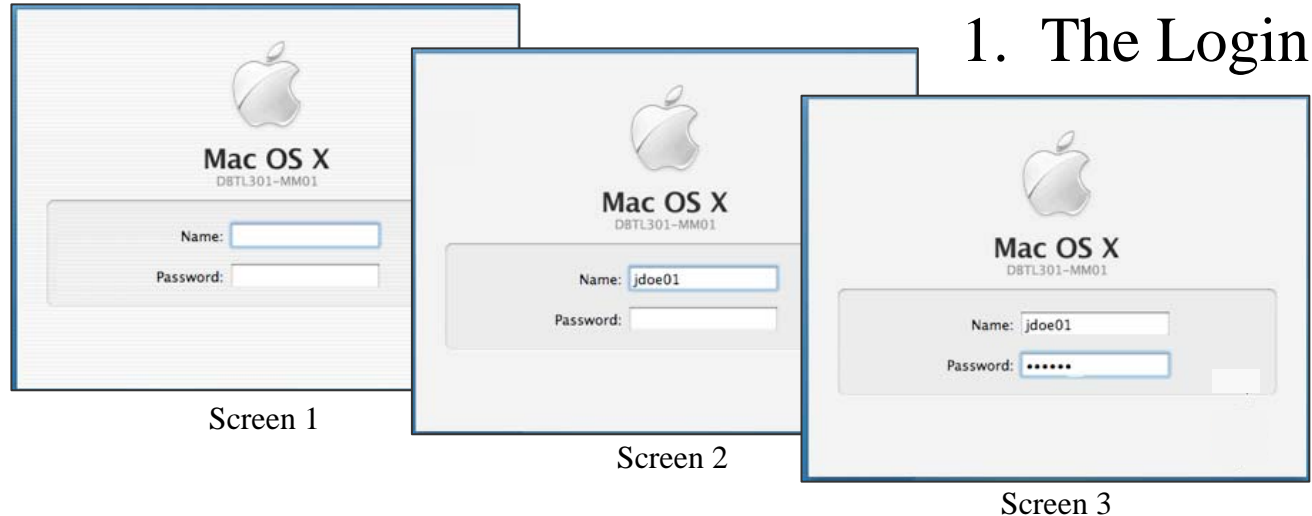


Macintosh: Getting Started

Leopard Update, Fall 2008 with Gmail Login, Fall 2009



The Macintosh OS X login screen with the Apple logo requires entries for the user's **Name** and **Password**.

- Screen 1:

Click the mouse in the white **Name** box and enter your login name (in lowercase letters).

Your **Login Name** is based on the name you use for registration, but now that CCSF students have Google accounts, the formation of the login name is different.

Your instructor can provide your login name if s/he requested it with the classlist.

Or, you can log in to your WebSTARS account and find it there under *Personal Information*.

Find a more detailed explanation with examples in the ACRC handout *What's my mail.ccsf.edu login name?*

- Screen 2:

Click the mouse in the **Password** box and enter your password. (Display is masked.)

Your **Initial Password** is based on your birth date. It is:

the first 3 letters of your birth month, followed by
two numbers for the day of your birth, followed by
two numbers for the year of your birth.

- Screen 3:

Mouse-click the Log In logo  in the lower righthand corner of the screen.

If your login fails, the screen image will vigorously shake left and right and you must try again.

If successful, you will see a horizontal blue-striped 'barber pole' spinning in the middle of the screen while your home directory loads.

2. The Required Password Change



On your *first* successful login, Macintosh OS X will require you to change your password.

We recommend that you follow the same guidelines set for your HP UNIX Hills account password, presented on page 3 of the handout *HP UNIX #1: Logging in and Logging Out*.

Macintosh allows the password to be as short as 5 characters, but it *does not* allow the password to begin with a numeral digit.

Do not strike the *Enter* key until Step 4 below. Note the directed use of the *Tab* key to move from one response point to another. Also note that all of the password displays are masked with asterisks for security purposes.

1. Type your new password in the box labeled *New Password:*. (Strike *Tab* key to advance.)
2. In the box labeled *Verify Password*, type new password again to confirm. (Strike *Tab*.)
3. Leave the *Hint:* box blank. **DO NOT ENTER YOUR PASSWORD HERE!**

This space is accessible to anyone who tries to break into your account!

4. Strike the *Enter* key to change the password. (OR, click the *Login* button to do so.)

If the two entries don't match, you are required to try again before being allowed to proceed. The window shakes and the cursor jumps back to the *New Password:* box where you may begin the password change sequence again.

Before you try to logoff, make sure you've closed all files and quit all applications. Status indicators that look like tiny white ovals show under icons in the Dock for any applications still open. The first menu name is *Finder* because that application is running when your home directory is open.

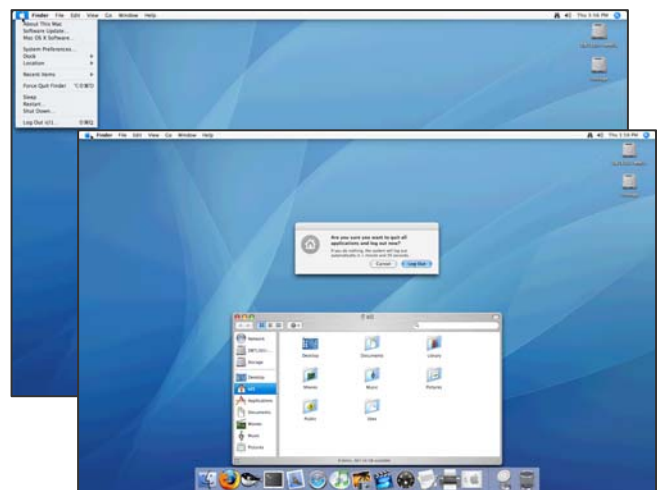
- Click the Apple logo to the left of the *Finder* on the menu bar.
- Click *Log Out*, the last Apple Menu option.

The "Last Chance" dialog box appears and asks if you're *sure* about logging out.

- You may click the *Cancel* button to stop the log out procedure if you want, but
- you *must* click *Log Out* before leaving.

Failure to do so will leave your account open and accessible to others.

You are responsible for your account and your home directory and what is done with them. Accounts not logged out will be disabled.



3. The Log Out