

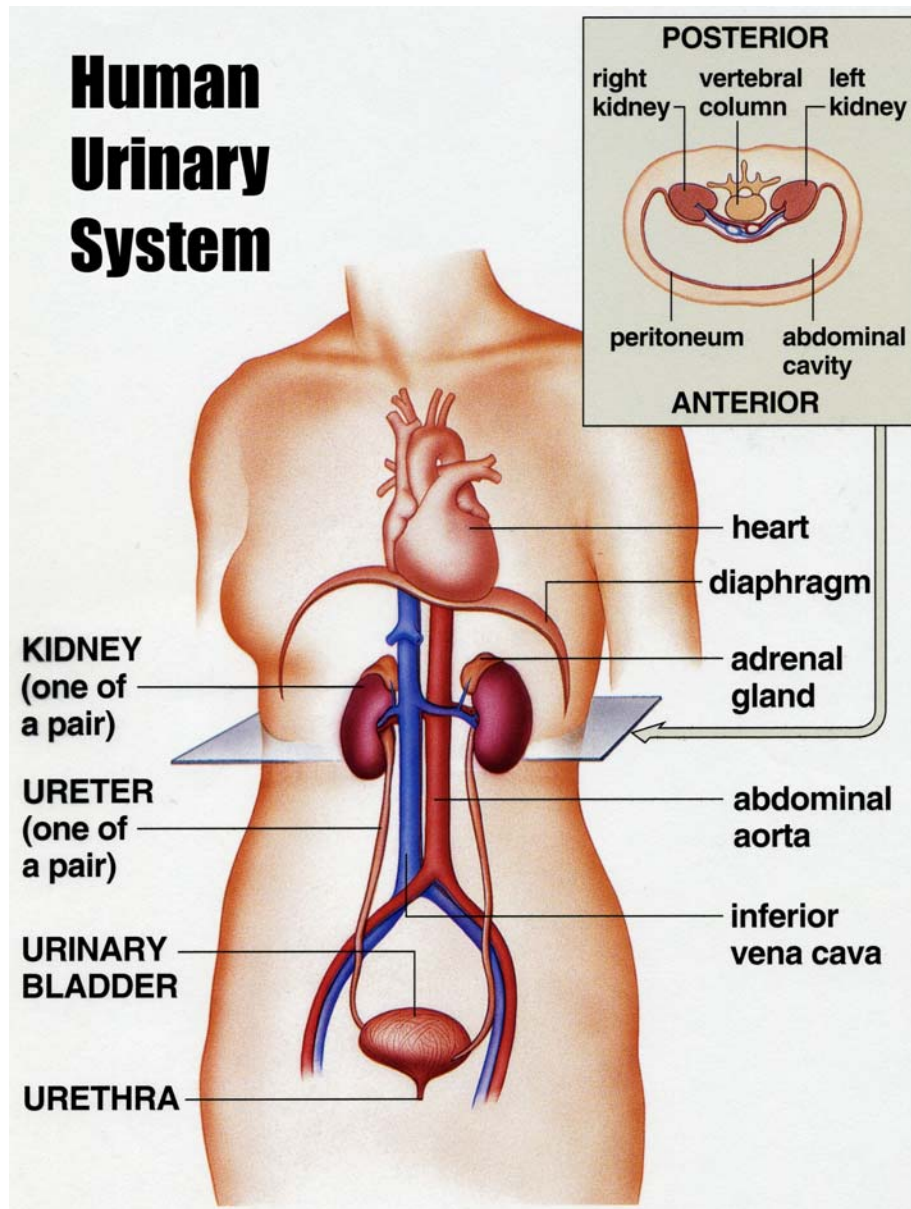
Urinary System Lab

Dr. J. Lim

Gross Anatomy of the Human Urinary System

Utilizing the torso models and/or class notes:

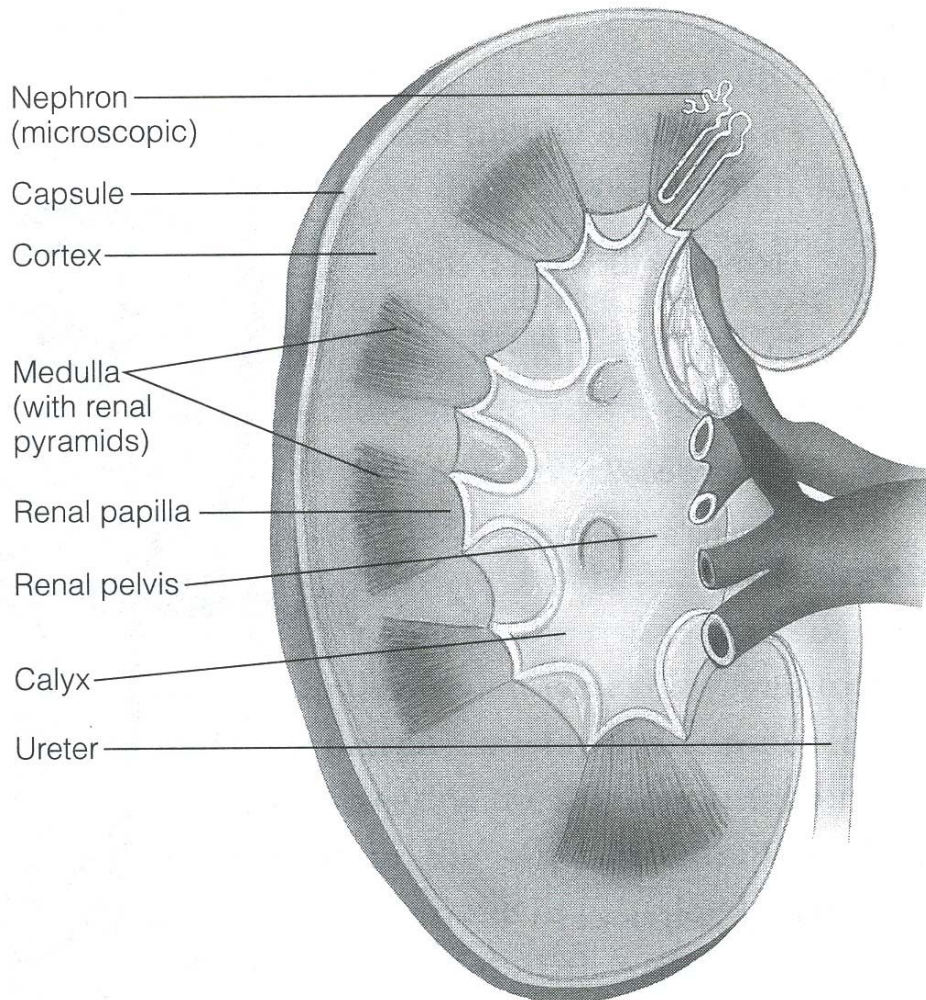
Locate the urinary system organs and structures.



Next state the primary function of the following:

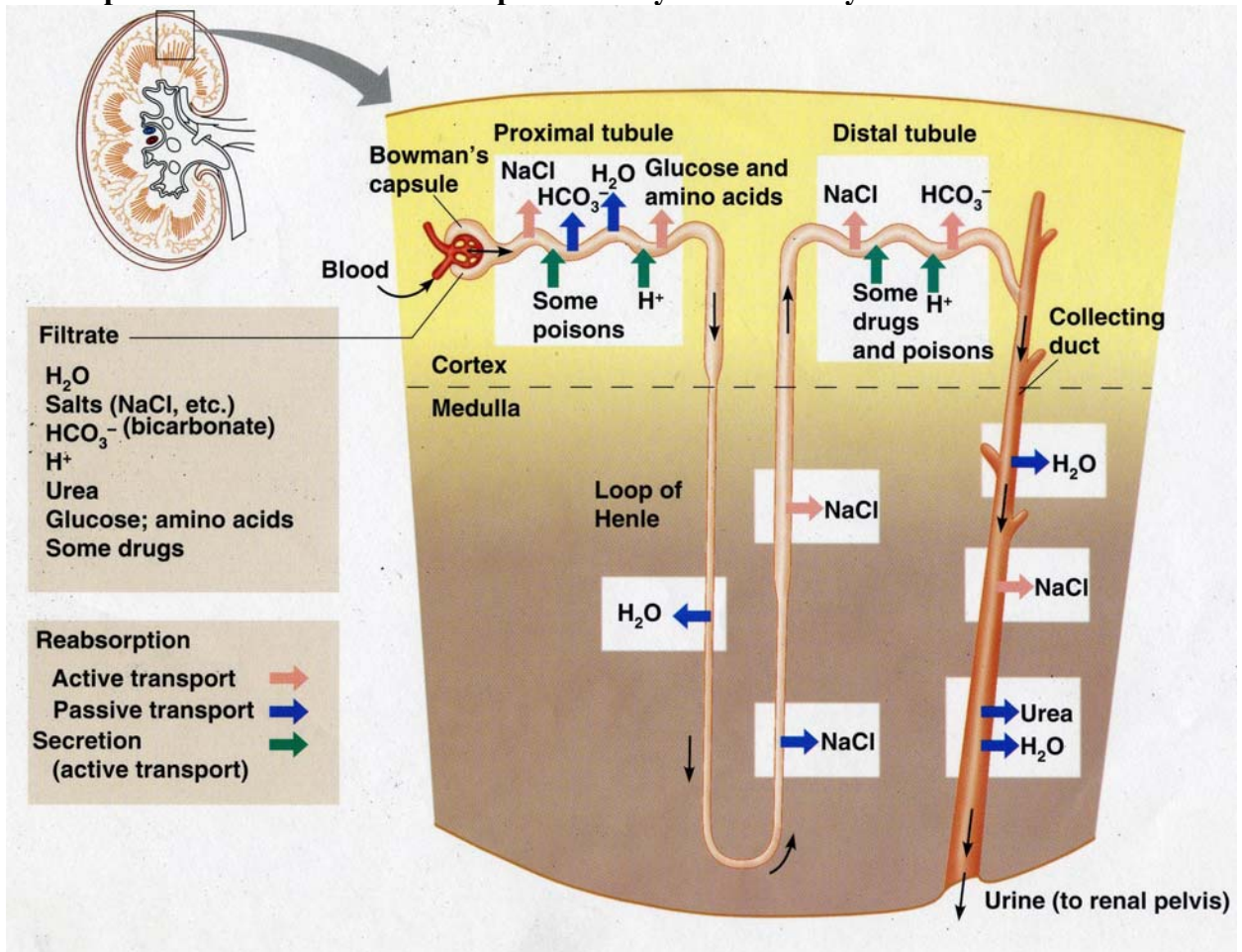
- kidneys
- ureters
- urinary bladder
- internal and external urethral sphincter
- urethra

**Gross
Internal
Anatomy
of the
Kidney**
*Utilizing
a kidney
model:*
Locate
the major
internal
regions
of the
kidney.



- Cortex, medulla, pyramids, columns, calyces, pelvis
- State a principal functions of the following:
- nephron
 - renal pyramids
 - calyx
 - renal pelvis

The Nephron – Functional Microscopic Anatomy of the Kidney



Utilizing

- the model of a bisected kidney that demonstrates the nephron

Locate and state an important function of the following structures of the nephron.

- afferent arteriole
- efferent arteriole
- glomerulus
- glomerular (Bowman's) capsule
- proximal convoluted tubule (PCT)
- loop of Henle
- distal convoluted tubule (DCT)
- collecting duct
- peritubular capillary

FETAL PIG LAB FOUR: Urinary System