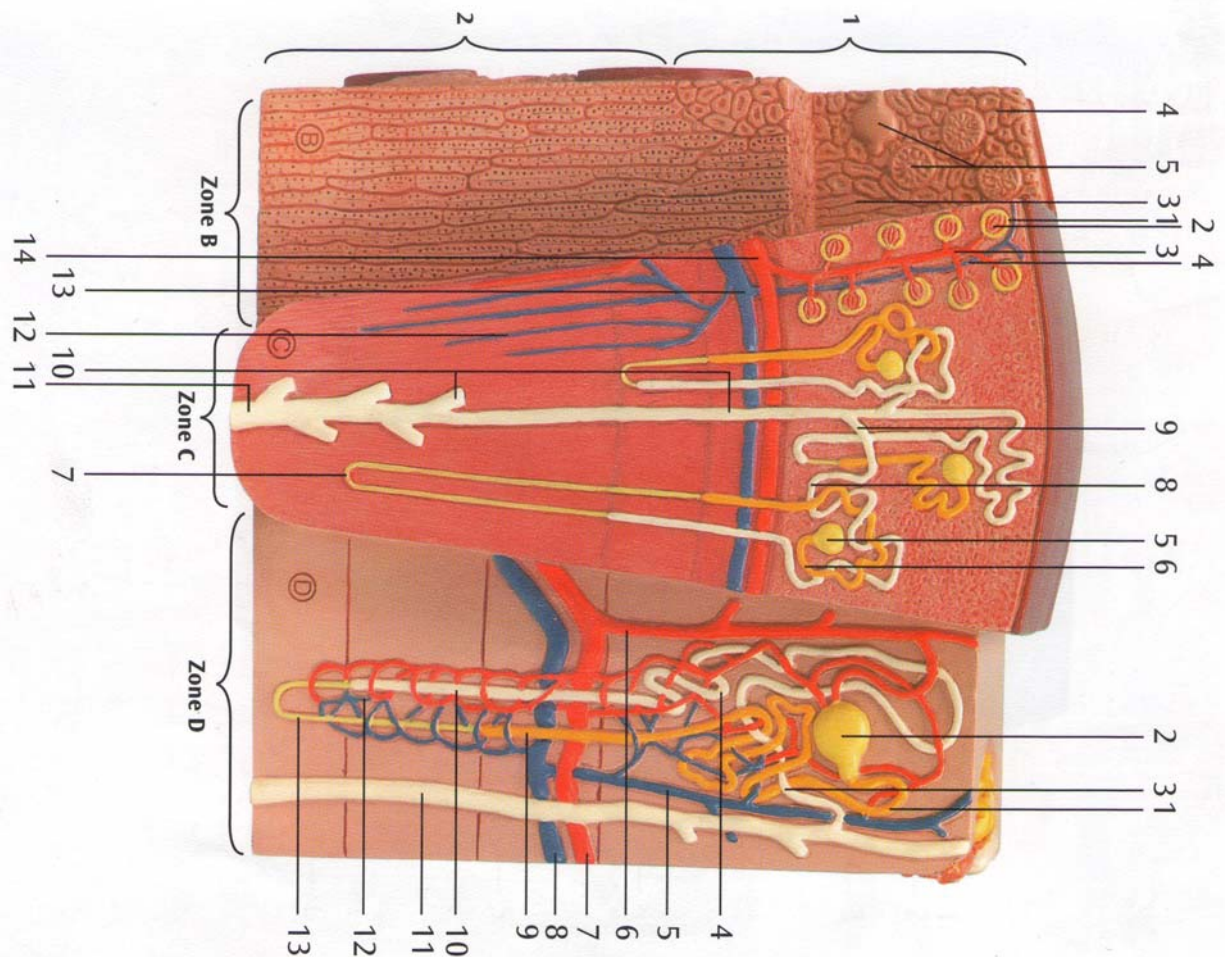


3B MICROanatomy™ Kidney



This model shows the morphologic/functional units of the kidney greatly magnified.

The fine-tissue structures that serve the production of urine are shown in six model zones that are identified with the letters A - F. The individual model zones are described from left to right as seen by the viewer:

Zone A: Longitudinal section of a kidney.

Zone B: Section of renal cortex and renal medulla.

Zone C: Wedge-shaped section of a kidney lobe with a diagrammatic depiction of three nephrons with Henle's loops of different lengths and diagrammatic depiction of the vascular supply.

Zone D: Diagrammatic illustration of a nephron with a short Henle's loop and didactic/diagrammatic illustration of the vascular supply.

Zone E: Diagrammatic illustration of an opened renal corpuscle with nephron and light-microscopic transverse sections of the proximal, attenuated and distal segments of a renal tubule.

Zone F: Diagrammatic/didactic illustration of an opened renal corpuscle.

- 13 Arcuate vein
- 14 Arcuate artery

D

- 1 Proximal convolution
- 2 Renal corpuscle
- 3 Junctional tubule
- 4 Distal convolution
- 5 Interlobular vein
- 6 Interlobular artery
- 7 Arcuate artery
- 8 Arcuate vein
- 9 Proximal straight tubule
- 10 Distal straight tubule
- 11 Collecting tubules
- 12 Capillaries
- 13 Attenuated tubule

E

- 1 Arteriola afferens
- 2 Glomerulus
- 3 Bowman's capsule
- 4 Proximal convolution
- 5 Proximal straight tubule
- 6 Attenuated tubule
- 7 Distal straight tubule
- 8 Basement membrane
- 9 Brush border
- 10 Distal convolution
- 11 Arteriola efferens

F

- 1 Distal tubule
- 2 Arteriola efferens
- 3 Extraglomerular mesangial cells
- 4 Glomerulus
- 5 Bowman's capsule
- 6 Proximal tubule
- 7 Podocytes
- 8 Arteriola afferens
- 9 Macula densa

A

- 1 Renticapsule
- 2 Renal cortex
- 3 Renal medulla
- 4 Renal pelvis
- 5 Renal calyx
- 6 Ureter
- 7 Renal sinus
- 8 Renal column

B

- 1 Renal cortex
- 2 Renal medulla
- 3 Medullary rays
- 4 Renal labyrinth
- 5 Renal corpuscle

C

- 1 Bowman's capsule
- 2 Glomerulus
- 3 Interlobular artery
- 4 Interlobular vein
- 5 Renal corpuscle
- 6 Proximal tubule
- 7 Attenuated tubule
- 8 Distal tubule
- 9 Junctional tubule
- 10 Collecting tubules
- 11 Papillary duct
- 12 Vasa recta