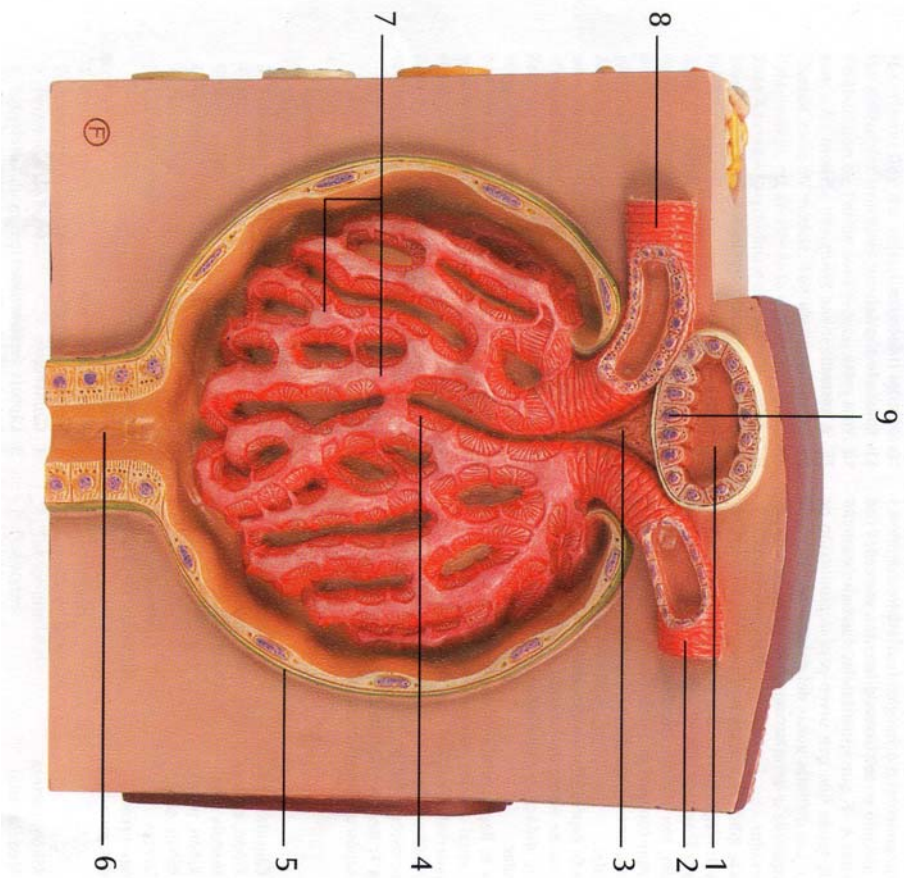


# 3B MICROanatomy™ Kidney

## Zone F



- This model shows the morphologic/functional units of the kidney greatly magnified. The fine-tissue structures that serve the production of urine are shown in six model zones that are identified with the letters A - F. The individual model zones are described from left to right as seen by the viewer:
- Zone A:** Longitudinal section of a kidney.
  - Zone B:** Section of renal cortex and renal medulla.
  - Zone C:** Wedge-shaped section of a kidney lobe with a diagrammatic depiction of three nephrons with Henle's loops of different lengths and diagrammatic depiction of the vascular supply.
  - Zone D:** Diagrammatic illustration of a nephron with a short Henle's loop and didactic/diagrammatic illustration of the vascular supply.
  - Zone E:** Diagrammatic illustration of an opened renal corpuscle with nephron and light-microscopic transverse sections of the proximal, attenuated and distal segments of a renal tubule.
  - Zone F:** Diagrammatic/didactic illustration of an opened renal corpuscle.
- A**
    - 1 Renicapsule
    - 2 Renal cortex
    - 3 Renal medulla
    - 4 Renal pelvis
    - 5 Renal calix
    - 6 Ureter
    - 7 Renal sinus
    - 8 Renal column
  - B**
    - 1 Renal cortex
    - 2 Renal medulla
    - 3 Medullary rays
    - 4 Renal labyrinth
    - 5 Renal corpuscle
  - C**
    - 1 Bowman's capsule
    - 2 Glomerulus
    - 3 Interlobular artery
    - 4 Interlobular vein
    - 5 Renal corpuscle
    - 6 Proximal tubule
    - 7 Attenuated tubule
    - 8 Distal tubule
    - 9 Junctional tubule
    - 10 Collecting tubules
    - 11 Papillary duct
    - 12 Vasa recta
  - D**
    - 1 Proximal convoluted tubule
    - 2 Renal corpuscle
    - 3 Junctional tubule
    - 4 Distal convoluted tubule
    - 5 Interlobular vein
    - 6 Interlobular artery
    - 7 Arcuate artery
    - 8 Arcuate vein
    - 9 Proximal straight tubule
    - 10 Distal straight tubule
    - 11 Collecting tubules
    - 12 Capillaries
    - 13 Attenuated tubule
  - E**
    - 1 Arteriola afferens
    - 2 Glomerulus
    - 3 Bowman's capsule
    - 4 Proximal convoluted tubule
    - 5 Proximal straight tubule
    - 6 Attenuated tubule
    - 7 Distal straight tubule
    - 8 Basement membrane
    - 9 Brush border
    - 10 Distal convoluted tubule
    - 11 Arteriola efferens
  - F**
    - 1 Distal tubule
    - 2 Arteriola efferens
    - 3 Extraglomerular mesangial cells
    - 4 Glomerulus
    - 5 Bowman's capsule
    - 6 Proximal tubule
    - 7 Podocytes
    - 8 Arteriola afferens
    - 9 Macula densa