

# 3B MICROanatomy™ Kidney

This model shows the morphologic/functional units of the kidney greatly magnified.

The fine-tissue structures that serve the production of urine are shown in six model zones that are identified with the letters A - F. The individual model zones are described from left to right as seen by the viewer:

**Zone A:** Longitudinal section of a kidney.

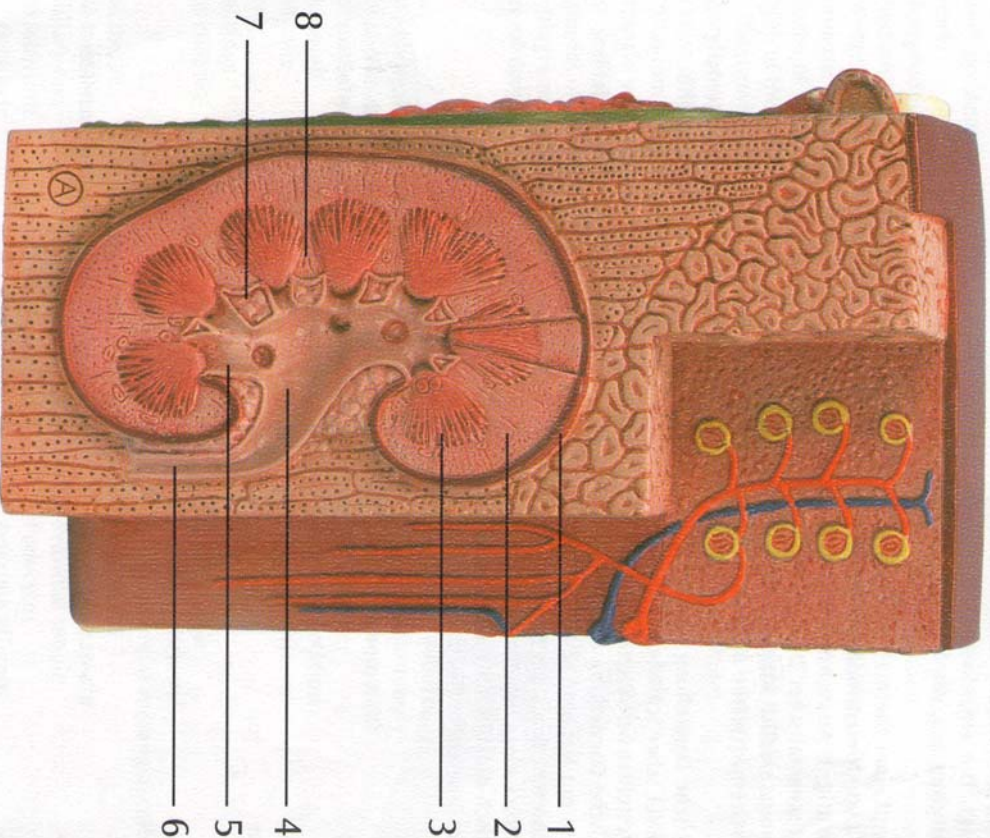
**Zone B:** Section of renal cortex and renal medulla.

**Zone C:** Wedge-shaped section of a kidney lobe with a diagrammatic depiction of three nephrons with Henle's loops of different lengths and diagrammatic depiction of the vascular supply.

**Zone D:** Diagrammatic illustration of a nephron with a short Henle's loop and didactic/diagrammatic illustration of the vascular supply.

**Zone E:** Diagrammatic illustration of an opened renal corpuscle with nephron and high-microscopic transverse sections of the proximal, attenuated and distal segments of a renal tubule.

**Zone F:** Diagrammatic/didactic illustration of an opened renal corpuscle.



- 13 Arcuate vein
- 14 Arcuate artery

**D**

- 1 Proximal convolution
- 2 Renal corpuscle
- 3 Junctional tubule
- 4 Distal convolution
- 5 Interlobular vein
- 6 Interlobular artery
- 7 Arcuate artery
- 8 Arcuate vein
- 9 Proximal straight tubule
- 10 Distal straight tubule
- 11 Collecting tubules
- 12 Capillaries
- 13 Attenuated tubule

**E**

- 1 Arteriola afferens
- 2 Glomerulus
- 3 Bowman's capsule
- 4 Proximal convolution
- 5 Proximal straight tubule
- 6 Attenuated tubule
- 7 Distal straight tubule
- 8 Basement membrane
- 9 Brush border
- 10 Distal convolution
- 11 Arteriola efferens

**F**

- 1 Distal tubule
- 2 Arteriola efferens
- 3 Extraglomerular mesangial cells
- 4 Glomerulus
- 5 Bowman's capsule
- 6 Proximal tubule
- 7 Podocytes
- 8 Arteriola afferens
- 9 Macula densa

**A**

- 1 Renicapsule
- 2 Renal cortex
- 3 Renal medulla
- 4 Renal pelvis
- 5 Renal calix
- 6 Ureter
- 7 Renal sinus
- 8 Renal column

**B**

- 1 Renal cortex
- 2 Renal medulla
- 3 Medullary rays
- 4 Renal labyrinth
- 5 Renal corpuscle

**C**

- 1 Bowman's capsule
- 2 Glomerulus
- 3 Interlobular artery
- 4 Interlobular vein
- 5 Renal corpuscle
- 6 Proximal tubule
- 7 Attenuated tubule
- 8 Distal tubule
- 9 Junctional tubule
- 10 Collecting tubules
- 11 Papillary duct
- 12 Vasa recta

**1**

**2**

**3**

**4**

**5**

**6**

**7**

**8**

**9**

**10**

**11**

**12**

**13**

**14**