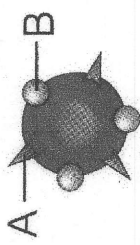
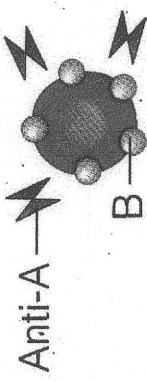
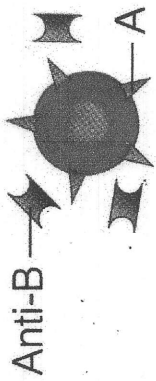
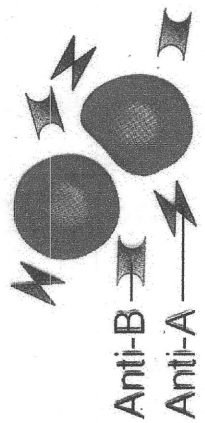


## ABO Blood Groups

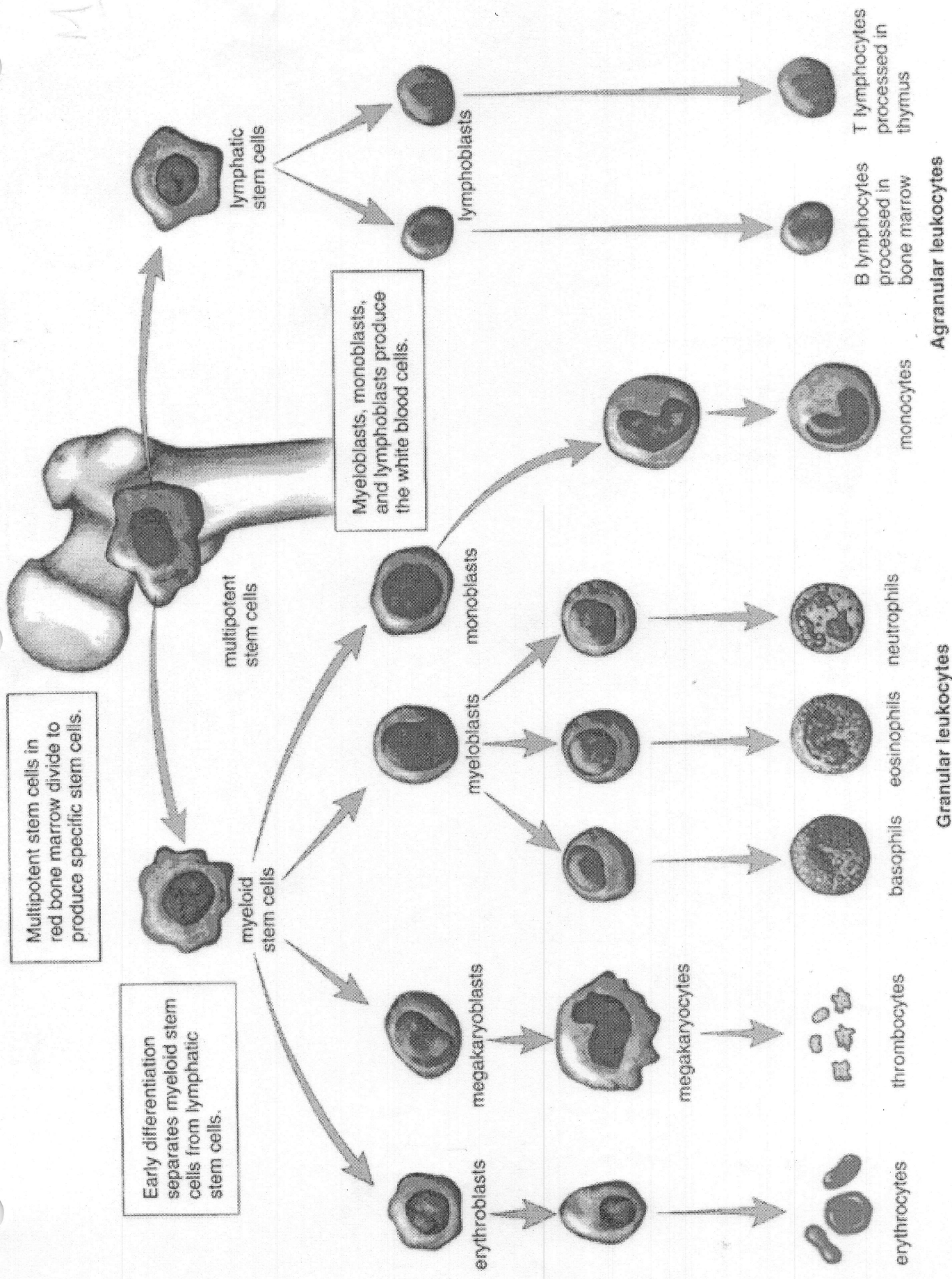
Blood group	Frequency		RBC antigens (agglutinogens)	Illustration	Plasma antibodies (agglutininist)	Blood that can be received
	(% U.S. population)	Asian				
AB	4	5	A B		None	A, B, AB, O Universal recipient
B	11	27	Anti-A B		Anti-A	B, O
A	40	28	Anti-B A		Anti-B	A, O
O	45	40	None Anti-B Anti-A		Anti-A Anti-B	O Universal donor

MK

Multipotent stem cells in red bone marrow divide to produce specific stem cells.

Early differentiation separates myeloid stem cells from lymphatic stem cells.

Myeloblasts, monoblasts, and lymphoblasts produce the white blood cells.



White blood cells

Red blood cells    Platelets

**Blood cell formation in red bone marrow**