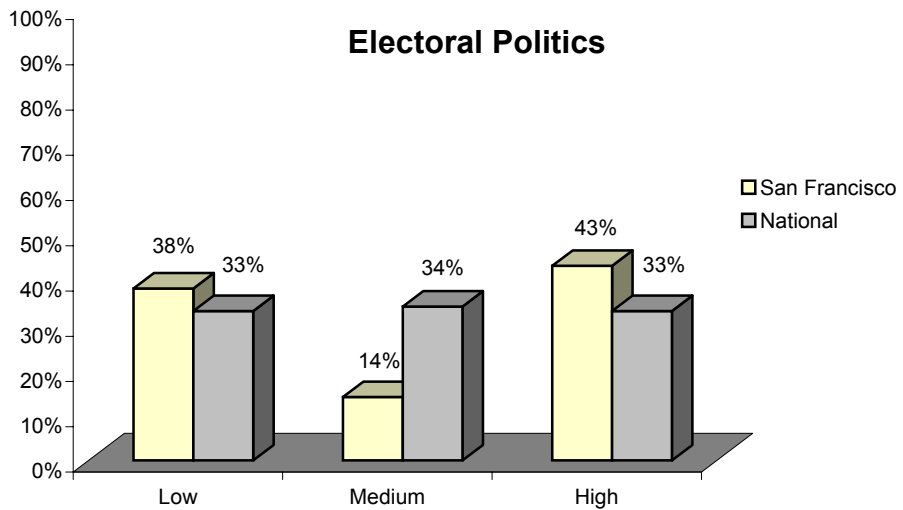
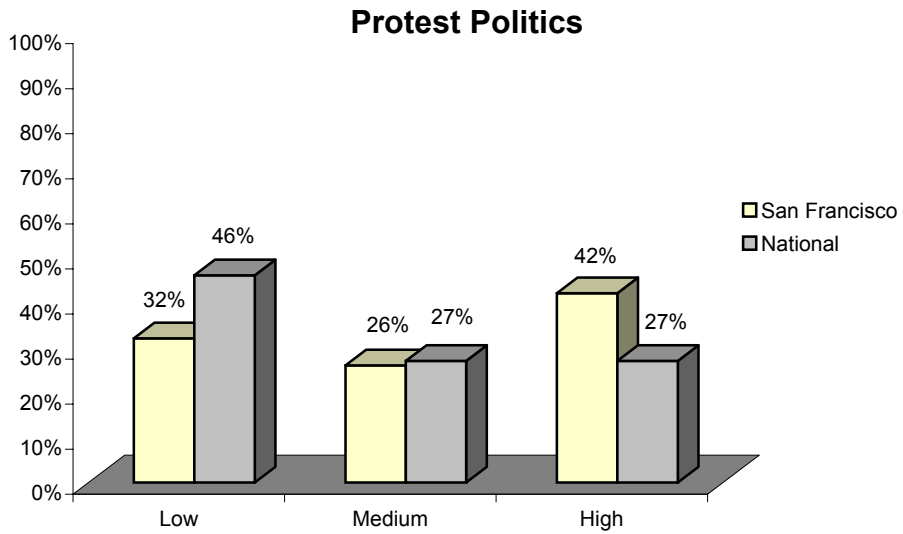


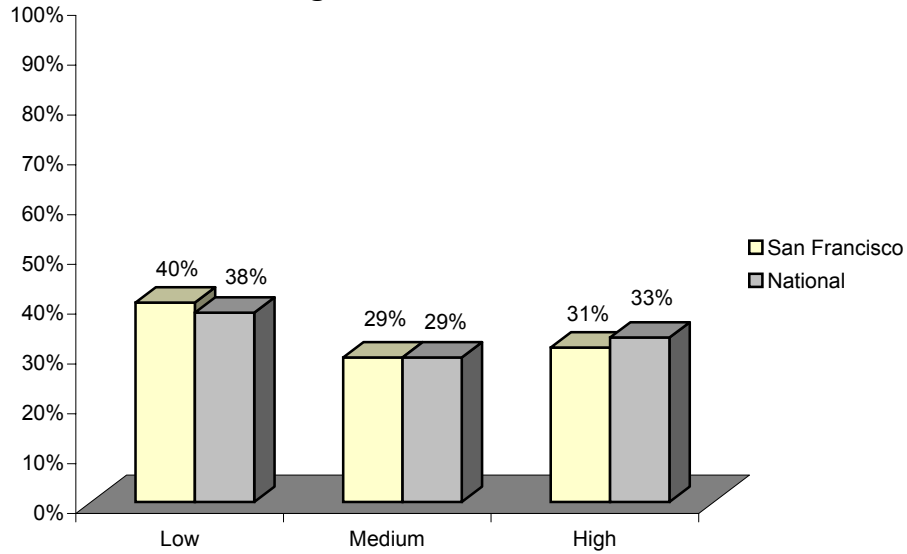
Social Capital Survey
 San Francisco vs. United States, 2000

A recent, national survey measured community engagement and social connectedness. Survey results determined that San Franciscans have a high level of engagement in both protest and electoral politics. However, San Francisco rates lower than the national average in organizational activism, religious engagement, and giving & volunteering. In particular, faith-based engagement is much lower.



Social Capital Survey, continued
 San Francisco vs. United States, 2000

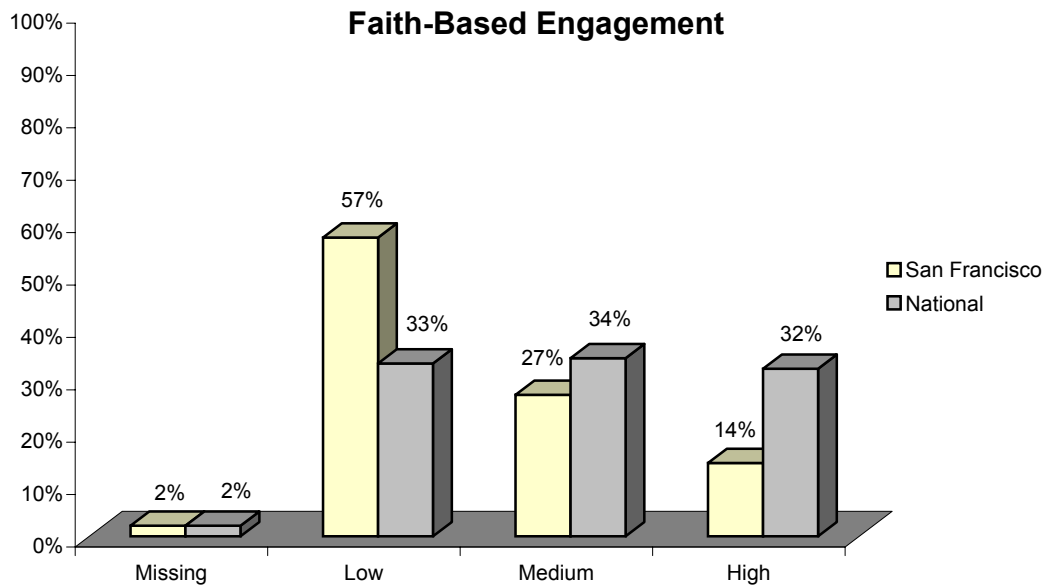
Organizational Activism



On their participation in a variety of formal organizations (ranging from religious organizations to parent organizations to hobby clubs and self-help groups), San Franciscans rate slightly lower than the national average.

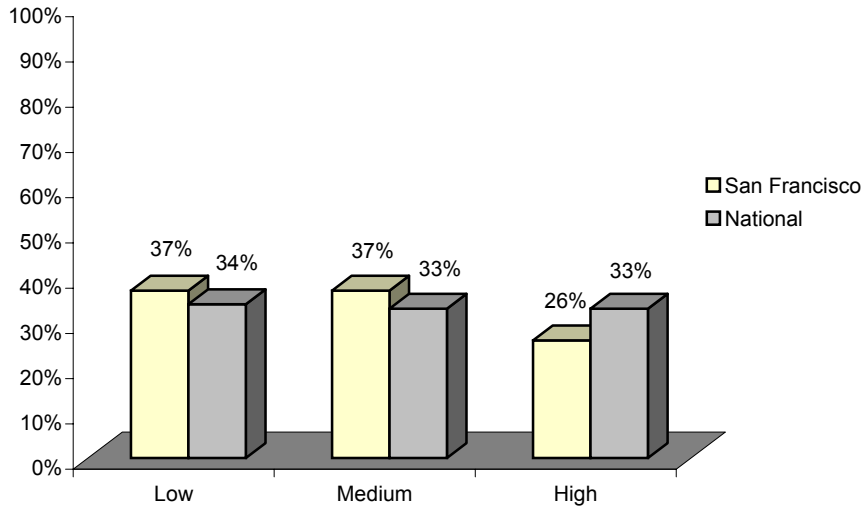
“Roughly one-half of all American connectedness is religious or religiously affiliated....” In this aspect, San Franciscans differ radically from the nation. Undoubtedly, this difference is partially reflected in the lower “organizational activism.”

Faith-Based Engagement



Social Capital Survey, continued
San Francisco vs. United States, 2000

Giving & Volunteering



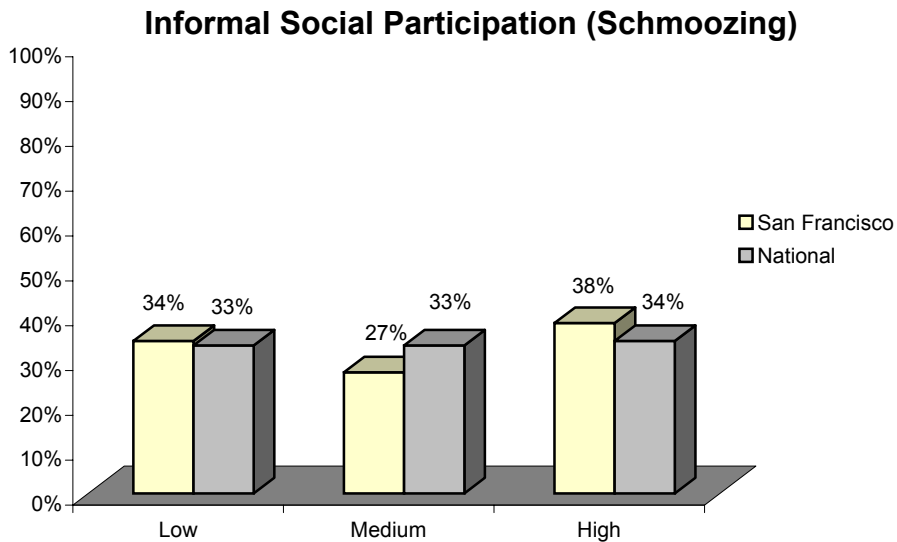
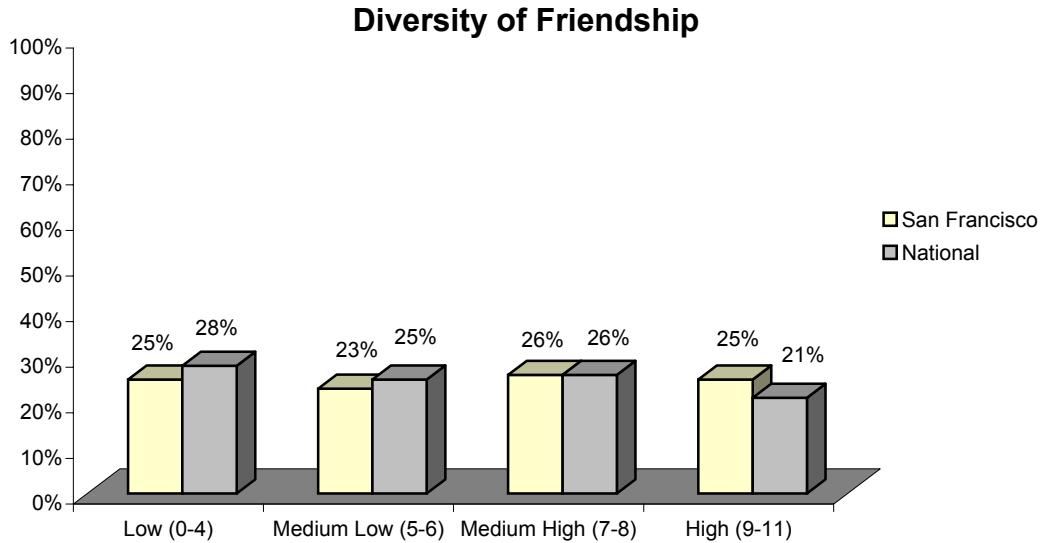
San Franciscans “give” less (based on a time and money composite) than the nation as a whole.

The next set of ratings relate to informal relationships and social trust. San Franciscans rate slightly higher than the national average in their diversity of friendships and informal social participation. Despite rating higher on these measure, San Franciscans have lower social and racial group trust.

Following these graphs is a depiction of the range of San Francisco respondents compared to the national respondents. San Francisco respondents are younger, show much greater ethnic diversity, are more highly educated and newer to the local community than the national average.

Social Capital Survey, continued
 San Francisco vs. United States, 2000

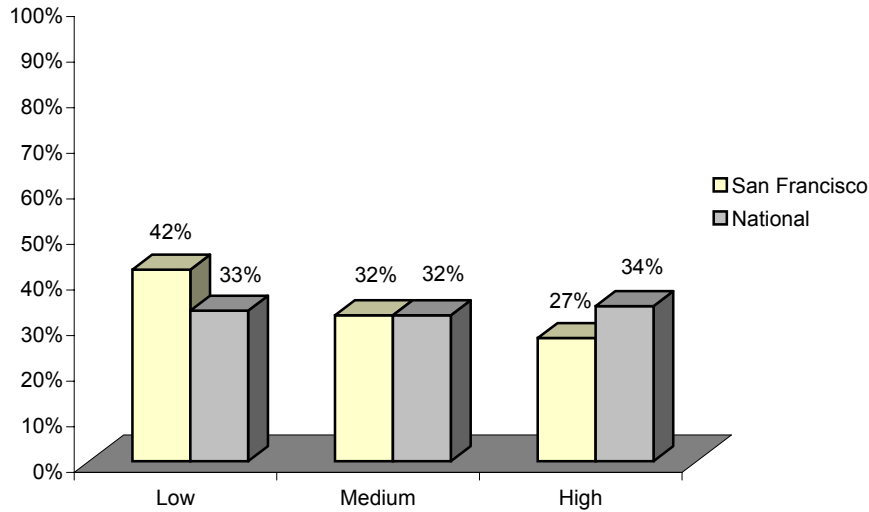
San Franciscans rate only slightly higher than the national average on diversity of friendship. This was measured based on whether the respondent has at least one personal friend in each of eleven different categories. The more categories a respondent had friends in, the higher the diversity rating.



San Franciscans rate slightly higher than the national average on time spent informally with neighbors, coworkers, friends and relatives.

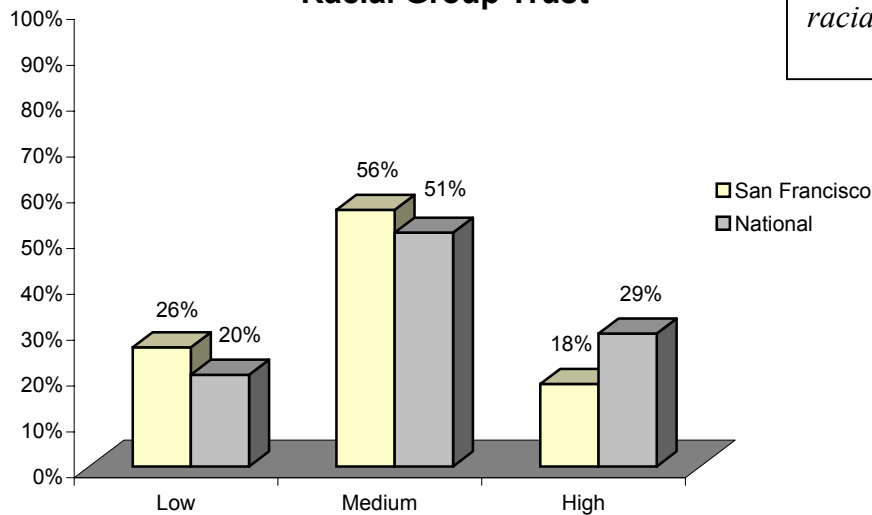
Social Capital Survey, *continued*
 San Francisco vs. United States, 2000

General Social Trust

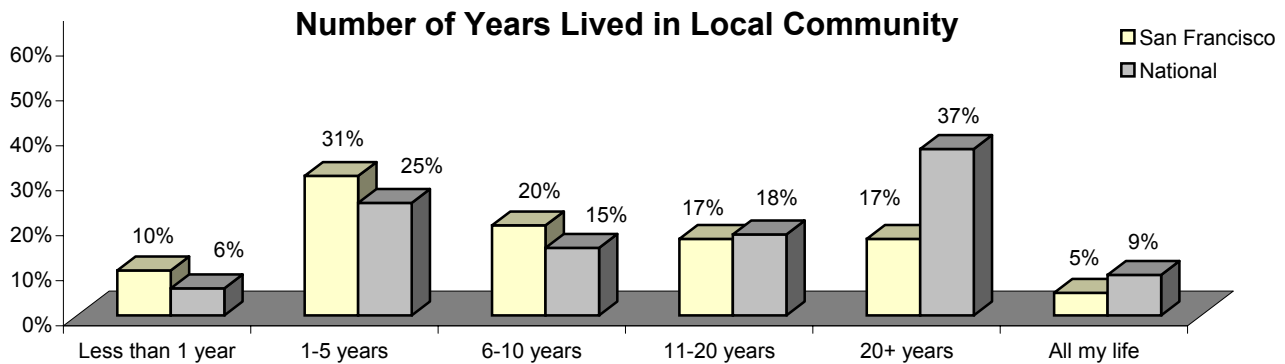
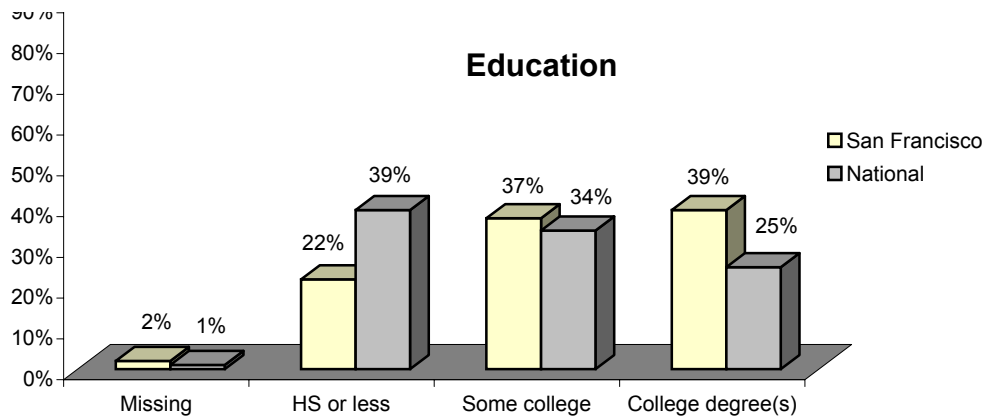
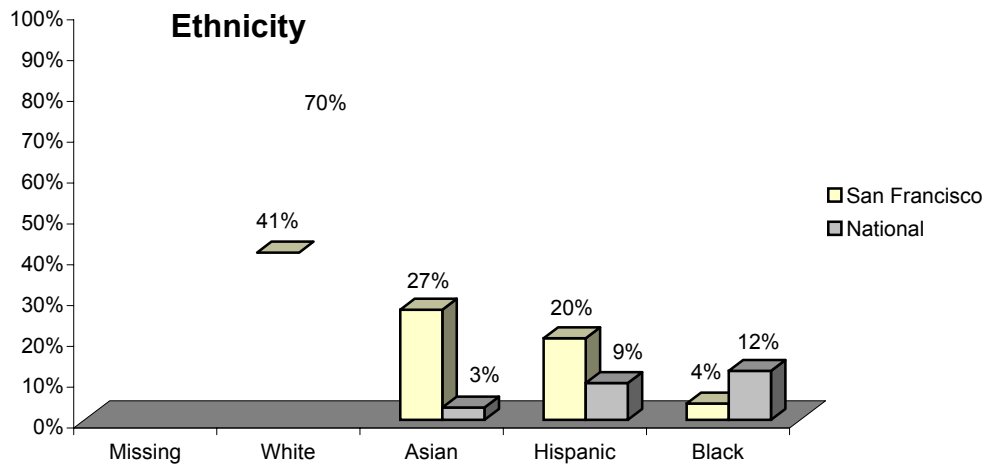
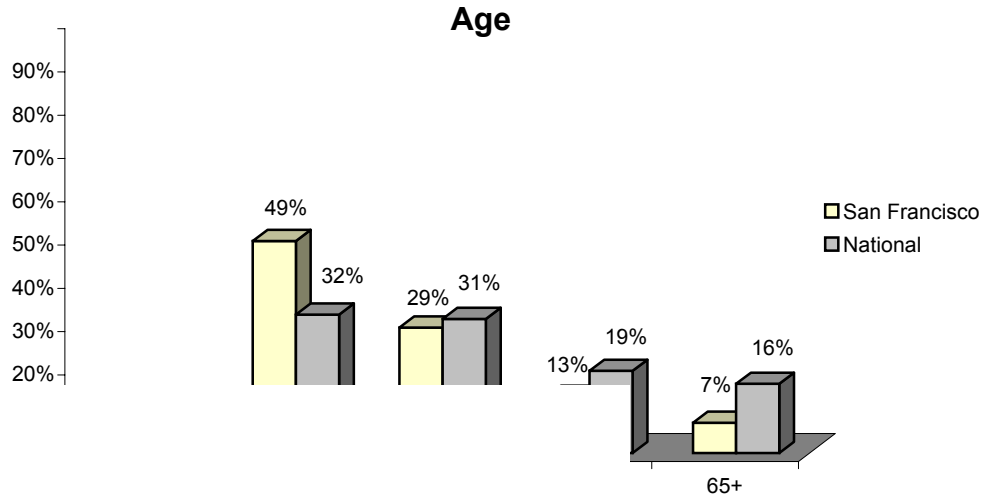


San Francisco residents rate lower than the national average on overall social trust and racial group trust.

Racial Group Trust



Social Capital Respondent Profile
San Francisco vs. United States, 2000



San Francisco's Social Capital

Comparisons to Other National Regions

	CQ*	Rank**	Quartile
Protest Politics	140	1	1
Conventional Politics	114	7	1
Diversity of Friendships	102	15	2
Informal Socializing	102	18	2
Social Capital Equality	100	22	3
Social Trust	95	27	3
Associational Involvement	91	28	3
Inter-racial Trust	84	35	4
Civic Leadership	84	36	4
Giving and Volunteering	79	36	4
Faith-based Engagement	70	40	4