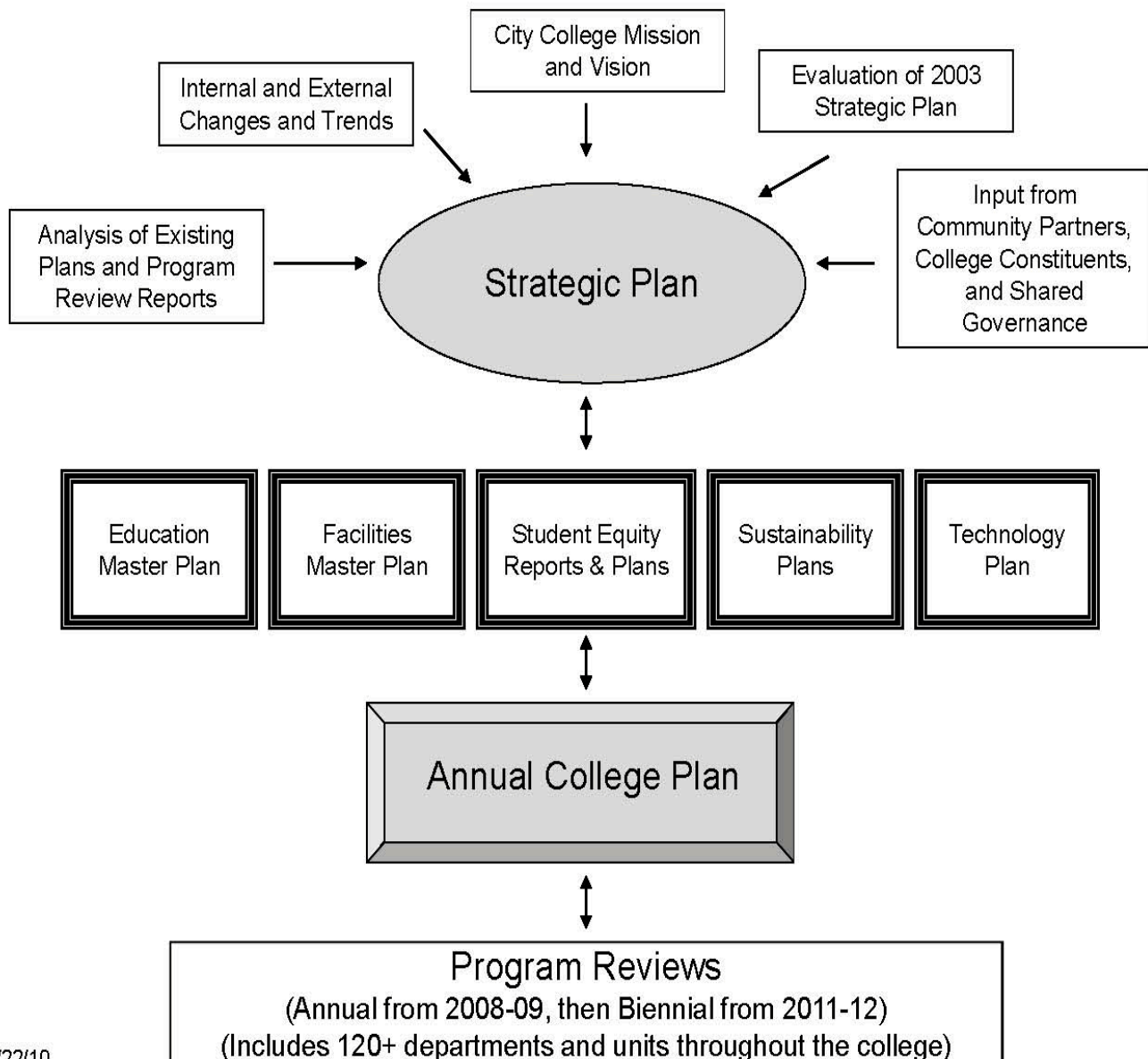


Flowchart of Long-Range and Annual Planning



ver 8/22/10,
amended 8/22/11

This flowchart depicts the relationships between the College's long-range plans, Annual Plan, and Program Review. As suggested by the double-headed arrows, the various "levels" of planning are interdependent, e.g., Program Reviews are informed by the prior Annual Plan as well as inform the subsequent Annual Plan.

Not depicted here but shown via the Gantt chart on the previous page are two essential components to the planning, budgeting, and assessment system: Annual Budget and End-of-Year Assessment. These components are critical to maintaining a robust cycle where planning leads to institutionally-supported action via budget allocations and where assessment leads to the review and refinement of planning objectives based on evidence.