



Request for Information 0140

Detailed, RFIs Grouped by RFI Number

CCSF Reservoir Site Work Project # 62970200 Bovis Lend Lease, Inc.
Tel: Fax:

RFI #: 0140 Date Created: 4/20/2010

Table with 4 columns: Answer Company, Answered By, Author Company, Authored By. Includes contact info for BKF Engineers and Bovis Lend Lease, Inc.

Co-Respondent Author RFI Number

Table with 3 columns: Subject, Discipline, Category. Subject: Solid lines on the north side of Parking Lot Q and JUF in Civil Drawing C2.50R. Discipline: Civil. Category: Drawing Clarification.

Cc: Company Name Contact Name Copies Notes

Question Date Required: 4/27/2010

Please clarify the solid lines(in cloud area) on north side of Parking Lot Q and JUF whether are AC curbs or not in the attached sketch.

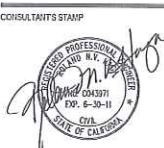
Suggestion

Answer Date Answered:

04/20/2010

Solid lines represent the edge of 2" thick AC pavement and delineate the AC paving from the no mow fescue. There is no AC curb to be installed in the indicated areas. Refer to sheet C1.90R2 for more information.

CONSULTANT  
**BKF**  
ENGINEERS | SURVEYORS | PLANNERS  
255 SHORELINE DRIVE, SUITE 200  
REDWOOD CITY, CA 94065  
PHONE: (650) 482-8300  
FAX: (650) 482-8399



AUTHORITY APPROVAL  
E. J. S. / DIVISION OF THE STATE ARCHITECT  
APPL. NO. 107354  
DATE: 3/16/2010

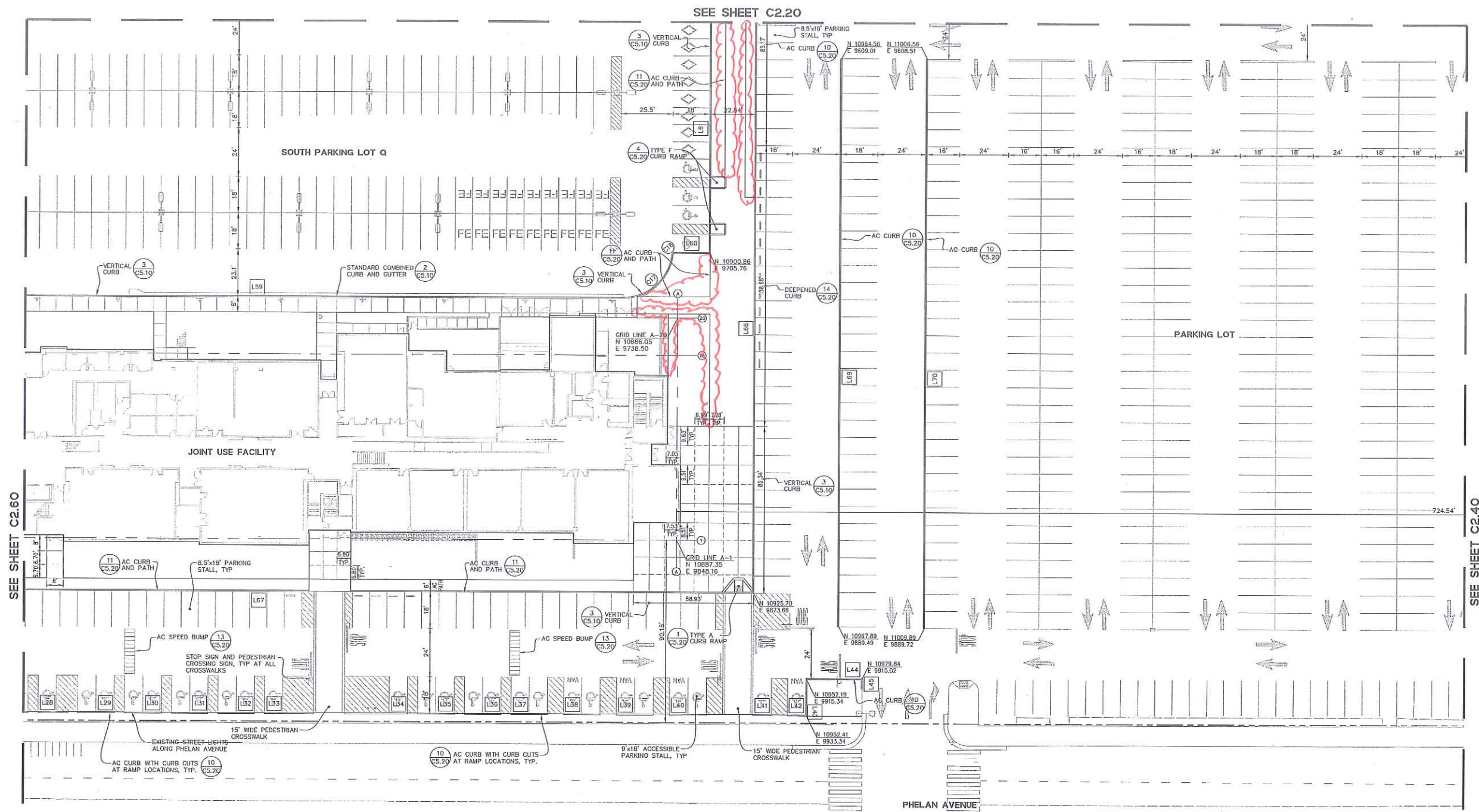
**CITY COLLEGE OF SAN FRANCISCO  
BALBOA RESERVOIR DEVELOPMENT  
San Francisco, CA**

HORIZONTAL CONTROL PLAN

DATE	ISSUE	REV.
3/12/09	DSA APPROVAL	
3/11/09	DSA PRELIM. CHANGE ORDER	
3/5/09	DSA PRELIM. CHANGE ORDER	

SCALE: 1"=30'  
DRAWN BY: JT, MD  
CHECKED BY: RH

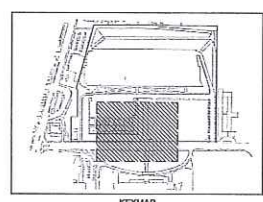
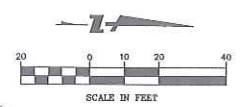
**C2.50R2**  
JOB NO: 06024-1 OF SHEETS



SEE SHEET C2.60

SEE SHEET C2.40

LINE TABLE			CURVE TABLE		
NO.	BEARING	LENGTH	NO.	RADIUS	DELTA
28	S00°40'45"E	14.50'	17	24.00'	84°13'40"
29	S00°40'45"E	18.00'	18	1.00'	84°13'52"
30	S00°40'45"E	18.00'			
31	S00°40'45"E	18.00'			
32	S00°40'45"E	18.00'			
33	S00°40'45"E	23.98'			
34	S00°40'45"E	31.00'			
35	S00°40'45"E	18.00'			
36	S00°40'45"E	18.00'			
37	S00°40'45"E	18.00'			
38	S00°40'45"E	18.00'			
39	S00°40'45"E	18.00'			
40	S00°40'45"E	18.00'			
41	S00°40'45"E	9.00'			
42	S00°40'45"E	9.00'			
43	N89°19'15"E	18.00'			
44	S00°40'45"E	27.64'			
45	N89°19'15"E	5.06'			
59	S00°40'45"E	359.52'			
60	S00°40'26"E	17.13'			
61	N89°19'15"E	122.50'			
66	N89°19'15"E	308.17'			
67	N00°40'45"E	429.37'			
69	N89°19'15"E	280.50'			
70	N89°19'15"E	281.23'			



APPROVED  
DIV. OF THE STATE ARCHITECT  
AC: EJS  
APPL. NO. 107354 DATE: 3/16/2010