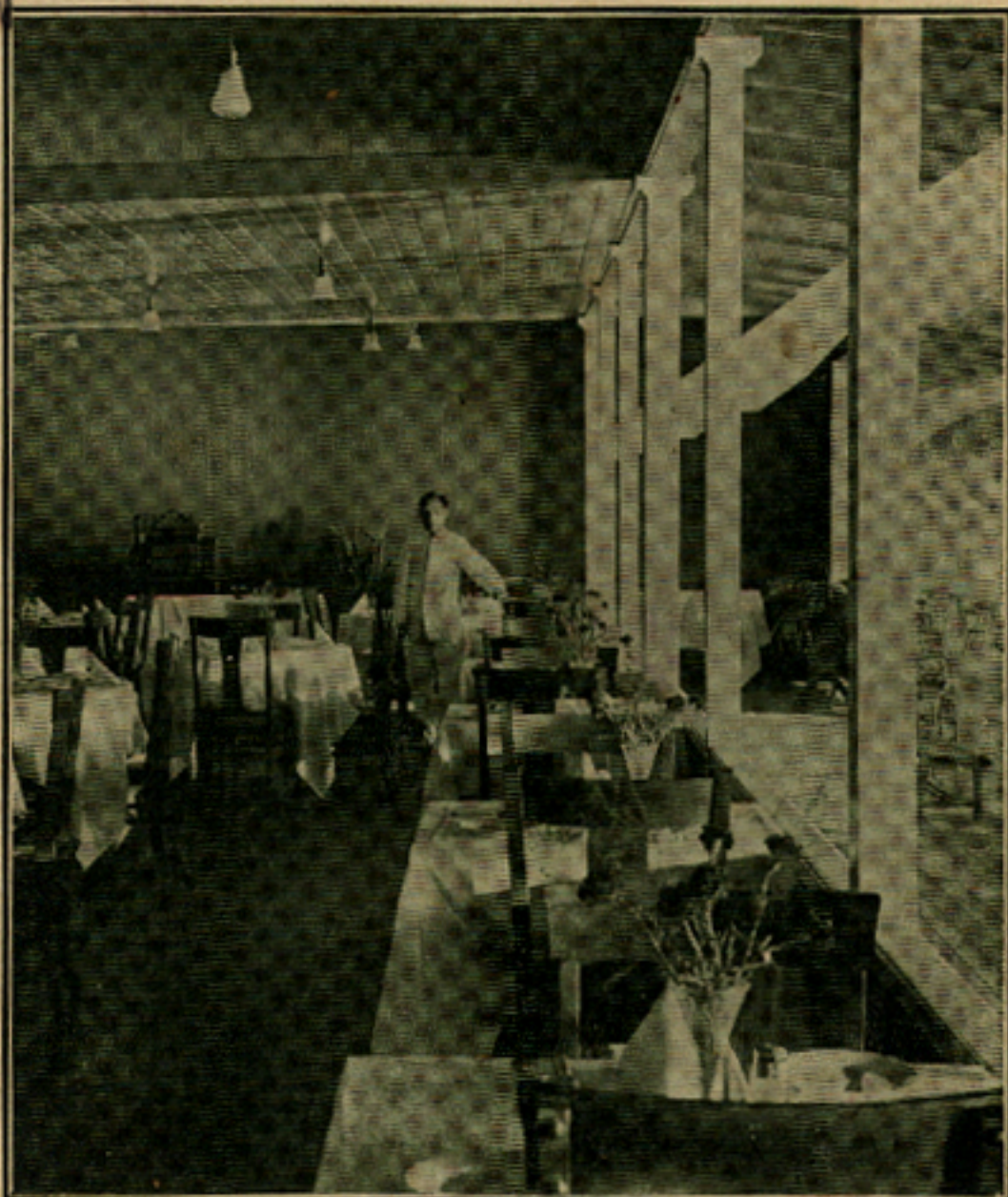


Waikiki
Inn
Cafe

Menu



FOR WINE LIST SEE LAST PAGE

For wine list see last page

Hawaii

HAWAIIAN FRUITS

Papaya10	Oranges10
Pineapple10	Iced Orange Juice20
Bananas10	Apples20

All Fruits in Season.

BREAKFAST CEREALS

Oat Meal15	Grape Nuts15
Rolled Oats15	Shredded Wheat15
Force15	Corn Flakes15

Any of the above orders served with Toast and Tea or
Coffee, 10c extra.

Waffles served with Maple Syrup or Honey or Pineectar15
Griddle Cakes, served with Maple Syrup or Honey or Pineectar15
Milk Toast, 25, with Coffee35
French Toast, 25, with Coffee35
Coffee, 10 Tea, 10 Chocolate—Cup 10, Pot 15 Iced Tea 10	

EGGS AND OMELETTES

Boiled25	Omelette with Asparagus Tips60
Poached on Toast25	Omelette with Mushrooms50
Scrambled25	Spanish Omelette50
Fried25	Omelette with green Peppers40
Shirred25	Omelette with Tomatoes35
Ham and Fried Eggs40	Omelette with Onions35
Bacon and Fried Eggs40	Omelette with Parsley30
Two Eggs, any style25	Omelette with Oysters60
Omelette plain25	Omelette with Green Peas40
Omelette with Ham40		

OYSTERS

Raw (½ doz.)50	Oyster Cocktail35
Stewed (½ doz.)50	Roast, plain50
Fried (½ doz.)50	Pepper Roast50
Oysters a la Newburg60	Half Shell50

SALADS

Lettuce20	Shrimp Salad50
Combination25	Lobster50
Potato Salad20	Cucumber25
Lettuce and Tomato25	Asparagus50
Chicken50	Asparagus Tips, Mayonnaise60

VEGETABLES

Potatoes (boiled and fried)10	Stewed Tomatoes15
Potatoes au gratin20	Stewed Corn15
Asparagus30	Green Corn in season20
String Beans15	Fried Onions10
Green Peas15	Stewed Mushrooms40
French Peas25	Boiled Rice15

RELISHES

Ripe Olives15	Chutney20
Chow Chow15	Green Olives15
Sardines35	Russian Caviar40
Cold Slaw15	Anchovy Toast15
Stuffed Olives25		