

Testing Banner 6 Web Connectivity from your Desktop

Banner is available on the CCSF campus web at <http://www.ccsf.edu/banner>. The new updated version of software is required on your computer when Banner is upgraded to Banner 6 on Feb. 21, 2005. The required version of software was automatically distributed to workstations via the CCSF network. Random testing by ITS has confirmed that this software was distributed over the CCSF computer network but users need to setup their workstation. This connectivity applies only to campus access.

It is easy (3 clicks) to setup your workstation.

To verify whether you have the correct version of the software “jinitiator” click on this link:

<http://147.144.2.241/servlets/f60servlet?config=banr>

Based on your system configuration you will see 4 possible screens

Go to the Fig. number/page that matches what you see

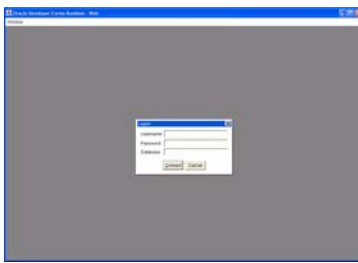


Fig. 1

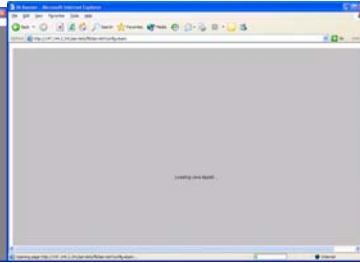


Fig. 2



Fig.3

Fig.4

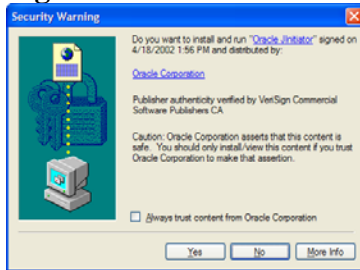
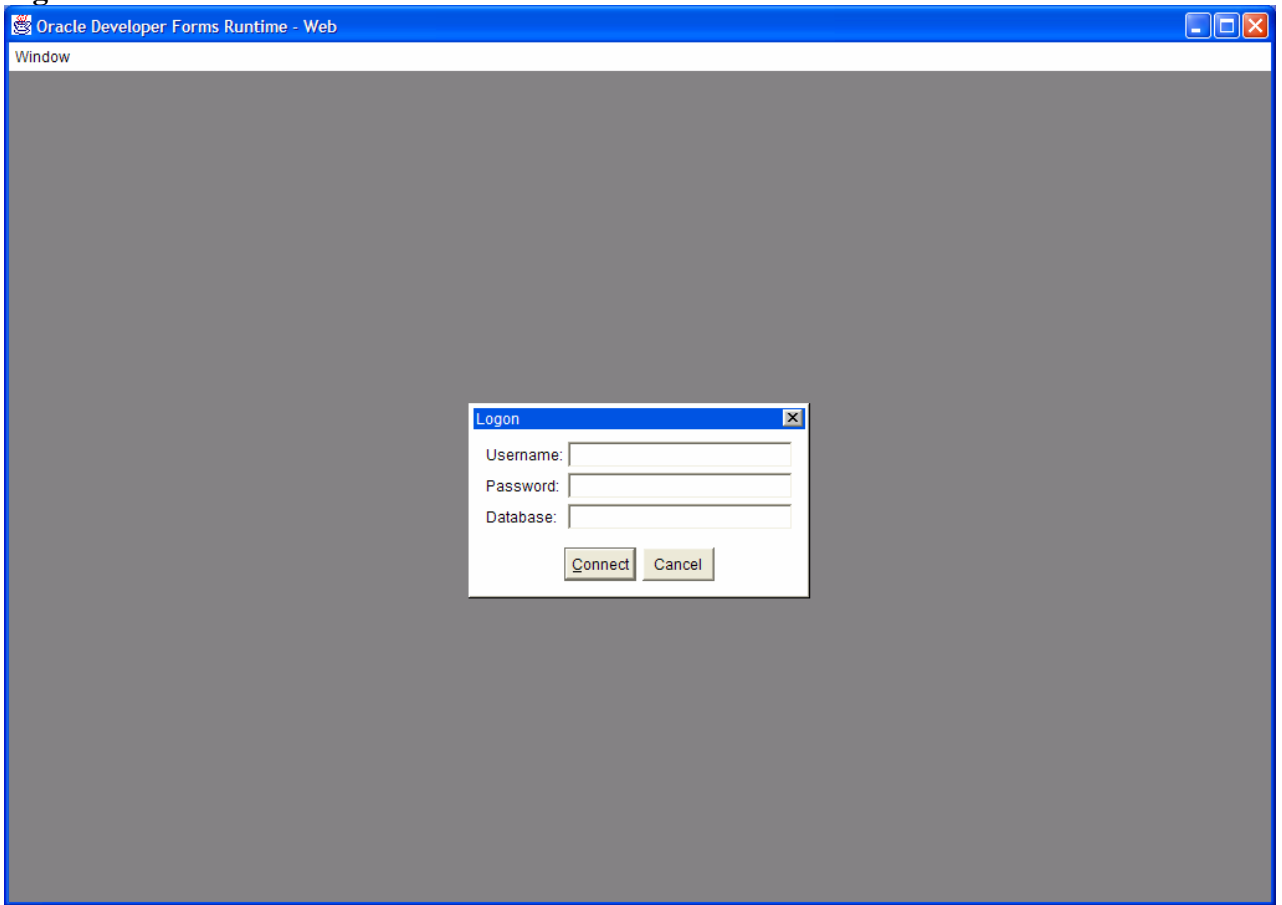
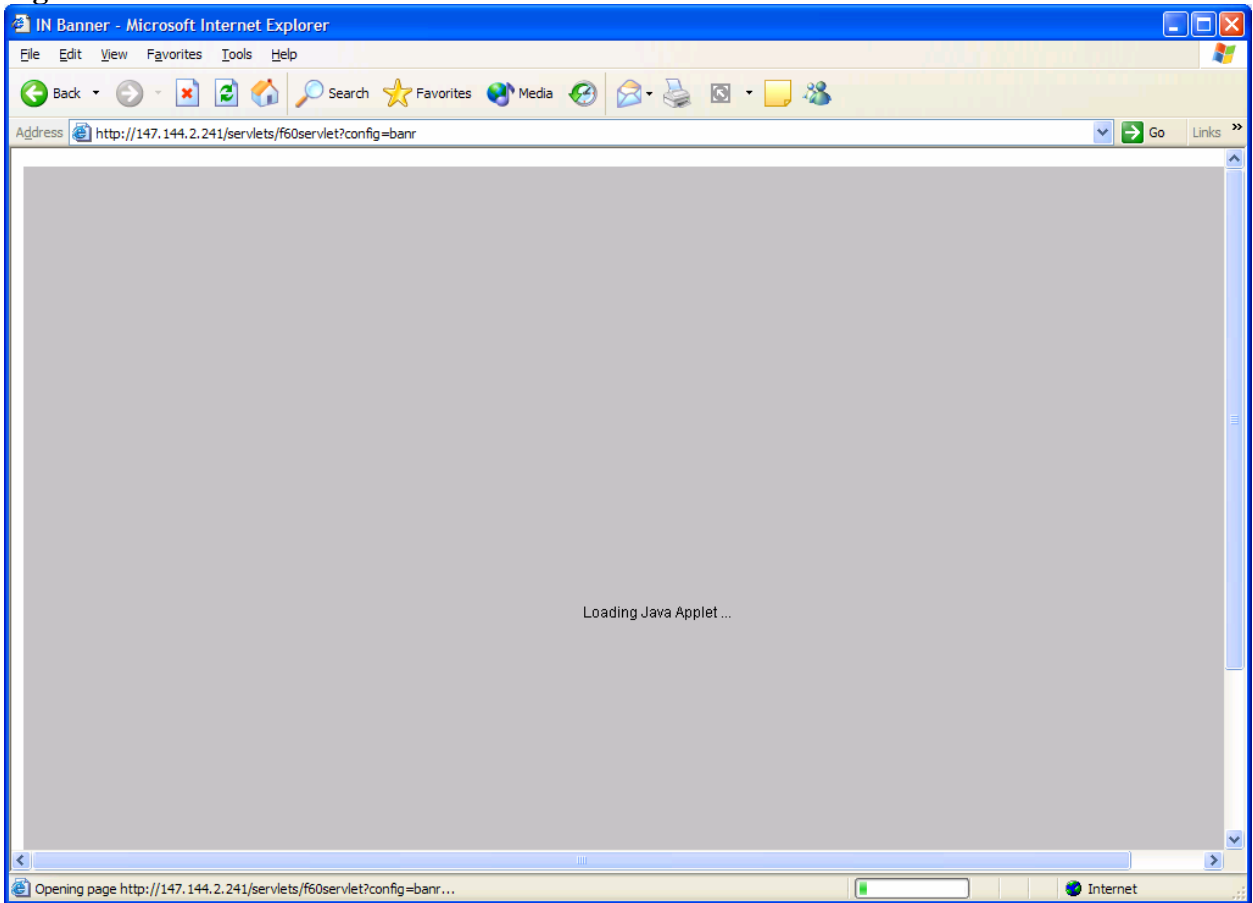


Fig.1



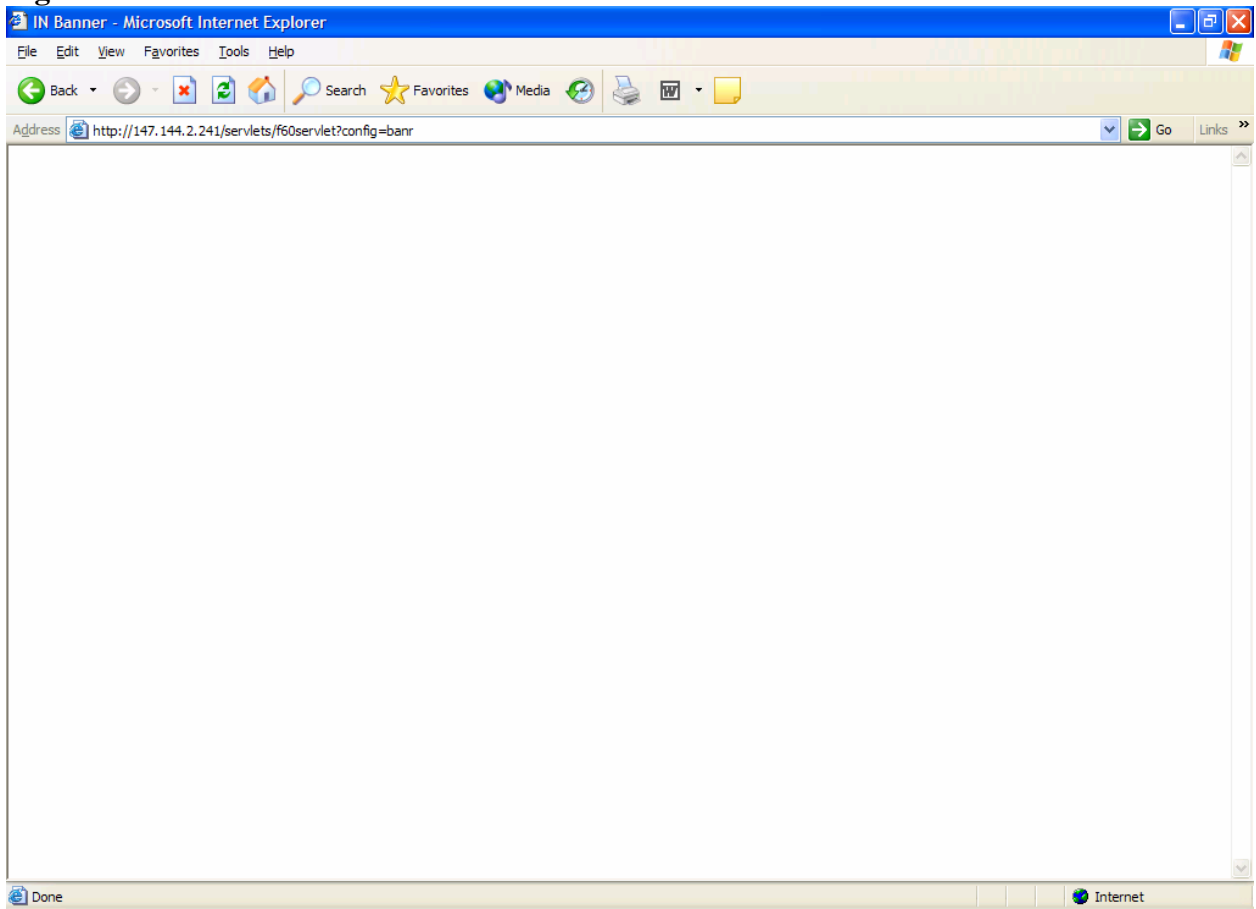
If you see this screen ...you're done!

Fig.2



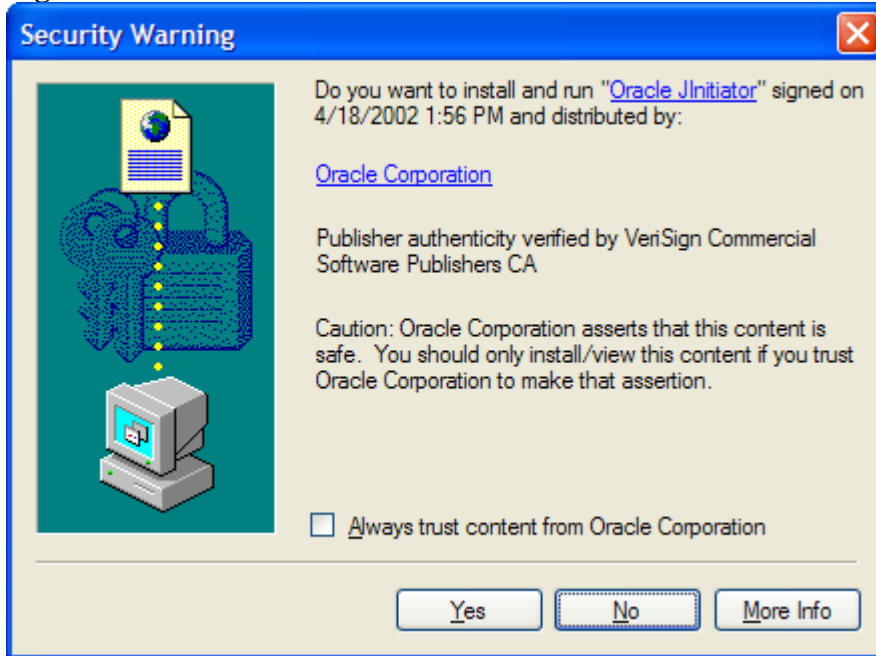
If you see this screen wait a minute or two it will load automatically.

Fig. 3

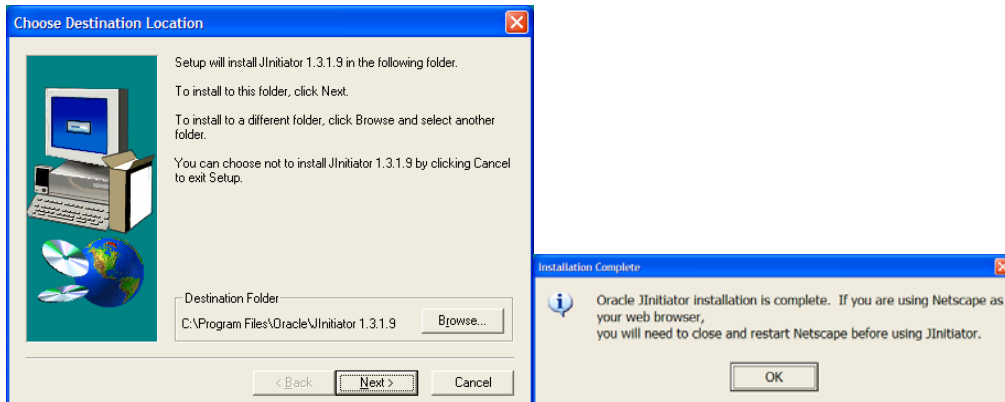


If you see this screen ...
you should call the Help Desk 239-3711 or your support technician to complete the software setup.

Fig. 4



At this point you can click on Yes and let it Setup, in three easy clicks.



CLICK Next

Click OK