



*City College of San Francisco  
Study Abroad Summer Program*

*The Silk Road  
July 22 – August 5, 2009*



  
GEOGRAPHIC  
EXPEDITIONS

## **IDST 28: Topics in the Pacific**

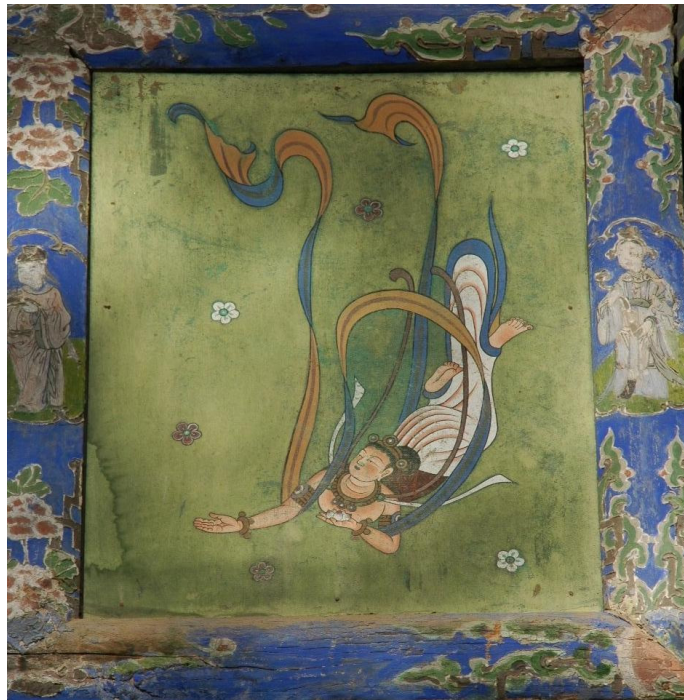
### **The Silk Road (3 units)**

In a historical context, contacts across the Pacific are a recent phenomenon. Human contacts across the vast Eurasian continent have a history that recedes far into the obscurity of prehistory. This course is an inquiry into the prehistoric and historic contacts between Asian and West, focusing on the caravan trade routes linking the Graeco-Roman world, ancient Persia and Indian, and China. We explore the economic, political, and religious contacts that brought silk to Rome, Greek art to India, and Buddhism to China. We examine the historical expansion of Han China into Central Asia and the historical movements of peoples across the Eurasian continent.

Lectures and informal discussions will be in English. These will take place at museums, monuments, rural villages, temples and other sites. A syllabus and course outlines will be distributed to participants at an orientation that will take place approximately one month before departure. Participants who successfully complete the course requirements will receive three units transferable to the UC and CSU systems. Students may request an option of Credit (CR) or No Credit (NCR).

### **PROGRAM FACULTY**

*Bob Jones* is a professor at City College of San Francisco. He has taught a variety of literature classes in the art, anthropology and history of China. He conducted archaeological fieldwork in Taiwan, where he lived for nearly a decade. He has led over 100 groups abroad since 1986. This is his tenth year with the Summer in China program.



***Day 1: Wednesday, July 22, 2009***

**SAN FRANCISCO** Group departure. Leave on Wednesday from San Francisco International Airport via United Airlines flight 857.

***Days 2 & 3: Thursday & Friday, July 23 & 24***

**SHANGHAI** (2 nights)

Arrive and overnight in Shanghai. We take the high-speed Maglev train into the city. In Shanghai, China's largest and most modern city, we explore the city's sights, including the Bund, the Shanghai Museum, take a river cruise and see the marvelous acrobats. ***(B,L,D, no D on July 23)***

***Day 4: Saturday, July 25***

**URUMQI** (1 night)

This afternoon we fly to Urumqi, capital of Xinjiang Uyghur Autonomous Region. This unremarkable capital has the unenviable distinction of being the most landlocked city on earth. We visit the Regional Museum to see the famous Xinjiang Mummies, and visit the Uyghur market. ***(B, L)***

***Days 5 - 7: Sunday - Tuesday, July 26 - 28***

**TURFAN** (2 nights)

We drive to Turfan from Urumqi. Turfan was once the ancient capital of the flourishing Uyghur kingdom. On the brink of the Turfan depression (the second deepest on earth), we visit the village of Toyoq and the nearby Buddhist caves, and Gaochang or Bezeklik Grottoes. We also visit the Imin Minaret, the Uyghur bazaar, the ancient karez irrigation system and Jiaohe ancient city. In the evening we enjoy a Uyghur singing and dancing performance. On the evening of July 28, we board an overnight train for Dunhuang. ***(B,L,D, No dinner July 27)***



**Days 8 & 9, Wednesday & Thursday, July 29 & 30**

**DUNHUANG and MOGAO GROTTOES (2 nights)**

Dunhuang, an old Han dynasty garrison town founded in 111 B.C. by order of the Emperor Wu, is called the “Treasury of the Desert”. Here the Silk Road split into northern and southern routes. After arrival,



we begin our exploration of Dunhuang and environs with a visit to Yangguan (South Pass) and Yumenguan (Jade Gate Pass) at the western end of the Great Wall. On Thursday, we visit the magnificent Mogao Grottoes. Near Dunhuang, the Serindian art of northern India and Hellenistic Central Asia crystallized into a style that fused with Chinese art coming from the east. The greatest testament to this fusion is in the Mogao

Grottoes, the finest treasury of Buddhist mural art in the world. We also have an optional camel ride to Crescent Spring Lake at the Singing Sand Dunes. **(B,L,D No dinner on July 30)**

**Days 10 - 13, Friday - Tuesday, July 31 - August 3**

**XI'AN (3 nights)**

In the morning of July 31, we take a flight to Xi'an, ancient capital of 11 dynasties and the eastern terminus of the ancient Silk Road, linking China to the West. We witness one of China's greatest archaeological wonders: the spectacular terra cotta warriors. We also visit the Yangling Tomb Museum on the way to the city. We take a day trip to the imperial Tang tombs at Qianling, and visit the beautiful Xi'an mosque. Also on our itinerary are the Shaanxi History Museum, the Little Wild Goose Pagoda and the Xi'an City Museum. Enjoy an evening dumpling dinner. On the evening of August 3, we board an overnight train to Beijing. **(B,L,D, No dinner on August 1)**

**Day 14, Tuesday, August 4**

**BEIJING (1 night)**

We arrive Beijing early morning, and check in to our hotel and have breakfast before exploring the city. In the morning we tour through classic *hutongs* (small alleyways usually flanked by the gates and walls of traditional courtyard houses) will give you a better sense of Beijing as a working city; in the afternoon we visit the Capital Museum, the restored Confucius Temple and Imperial Academy next door. We enjoy an evening farewell Peking Duck dinner. **(B,L,D)**

**Day 15, Wednesday, August 5**

**BEIJING to USA**

This morning we transfer to the airport for our departing flight to San Francisco. We arrive the same day. **(B)**

**Trip Cost: \$4950 (minimum of 20 participants) + 1 Instructor**  
**\$4799 (21 – 25 participants) + 1 Instructor**  
**\$4599 (26 – 30 participants) + 1 Instructor**

**Single supplement cost: \$450**

**PLEASE NOTE:**

If you have health issues which could be exacerbated by hot and dry weather, please consult with your physician before enrolling in this program. We will be traveling in hot and arid desert areas of northwestern China where the temperatures may exceed 90° F during our visit. Although we will make every effort to use air-conditioned trains, buses and hotels, participants should expect to be exposed to the elements.

**PROGRAM COST: \$4950\***

**Single supplement cost: \$450**

**\* Cost is based on a minimum of 20 participants.**

**PROGRAM COSTS INCLUDE:**

- Round-trip airfare between San Francisco/Beijing/San Francisco
  - \* Note: fuel surcharges may be subject to change at time of ticket issuance
- All transportation by bus/train/plane in China, as per itinerary
- Lodging at 2-3 star hotels based on double occupancy in China
- All meals as specified on the itinerary (Breakfast, Lunch, Dinner)
- All sightseeing and entrance fees as listed
- Airport taxes
- Services of English-speaking local guides
- Orientation and academic counseling
- Geographic Expeditions Emergency Medical and Evacuation Insurance coverage

**PROGRAM COST DOES NOT INCLUDE:**

- CCSF Tuition and Fees
  - \$73 for three units for California residents
  - \$610 for Non-Residents of California
  - Students should contact the CCSF Study Abroad Program Office at (415) 239-3778 for more information
- Passport and visa fees
- Single supplement (\$450)
- Books and school supplies
- Some dinners as indicated in the itinerary
- Gratuities to guides, drivers and hotel porters
- Items of personal nature, such as phone calls, laundry, postage and liquor
- Excess baggage charges
- Extension travel

## HOW TO ENROLL

Please call Esther Hsu at Geographic Expeditions (415) 929-0550 for an application.

Applications can also be requested from the Study Abroad Office at CCSF by calling (415) 239-3778 or by visiting the Study Abroad Programs Office in CLOUD HALL RM212. Participants will be required to complete an application and paper work for CCSF, which will be sent to you once you have completed the application for Geographic Expeditions.

## BOOKING AND FINAL PAYMENT:

A non-refundable deposit of \$300 is required to secure the tour package and space in the program.

Acceptance is on a first-come, first-served basis. Space is limited. Your deposit will be returned immediately if space is not available. A first payment of \$2175 is due on April 22, 2009. A final payment of \$2475 is due on May 22, 2009. Payments arriving at Geographic Expeditions after May 22, 2009 will be subject to a \$100 late fee. ***Payment is by check only!***

## CANCELLATIONS

Non-refundable cancellation charge: \$300pp

45-60 days prior to departure: 25% of land cost

31-45 days prior to departure: 50% of land cost

30 days or less prior departure: No refund

Geographic Expeditions will not grant partial refunds for any unused trip arrangements after the trip has commenced or any refunds to trip members who do not complete any portion of the itinerary. We strongly recommend you purchase trip cancellation/interruption insurance/emergency evacuation insurance to protect your travel investment. This coverage will offset cancellation charges in the event of illness before or during the trip.



**SAN FRANCISCO COMMUNITY COLLEGE DISTRICT** Although the San Francisco Community College District has attempted to determine the accuracy of this brochure, the district does not assume any liability with respect to the contents of the brochure. Courses offered, together with other related matters contained herein; are subject to change without notice by the administration and Governing Board of the San Francisco Community College District for reasons related to enrollment, finances, scheduling, dates, costs or for any other reason at the discretion of the District. The District further reserves the right to add, amend or repeal any of its rules, regulations, policies and procedures. Travel, housing, meals and other logistical arrangements are provided by a contracting agency not affiliated with San Francisco Community College District. Participants will be required to sign a travel request and release which will exonerate the District from any liability. The District assumes responsibility only for providing a supervising instructor and appropriate academic units for the courses. All courses are subject to approval by the Governing Board of San Francisco Community College District. All students must enroll for course credit (CR/NCR option available when indicated in the catalogue); no auditors are allowed. Units and course grades will be awarded by City College of San Francisco.

*City College of San Francisco Board of Trustees:*

Lawrence Wong, President\* Dr. Natalie Berg, Vice President \* Dr. Anita Grier \* Milton Marks III\* Don Rizzo\* Rodel E. Rodis\* Julio J. Ramos\* Dr. Don Q. Griffin, Chancellor

### **FINANCIAL AID AND SCHOLARSHIPS**

Students currently attending CCSF may be eligible for grant or loan assistance through the Financial Aid Office. For an application and assistance, visit [www.ccsf.edu/Financial](http://www.ccsf.edu/Financial) or call (415) 239-3576. Students who have completed at least 12 units at CCSF may apply for scholarships ranging from \$50-\$500. For further information or an application, please call the Study Abroad Office at (415) 239-3778.

### **LIMITATION OF LIABILITY**

**Geographic Expeditions, Inc.**, its owners, agents, employees, affiliated companies, (**GE**), hereby give notice that they act only as agents for hotels, transportation companies, land operators, and suppliers of travel services, and assume no responsibility or liability whatsoever in connection with the operation or service of any aircraft, motor vehicle, boat, other conveyance, inn, lodge, or hotel which may be used wholly or in part, for services to GE's trip members. GE, its operators, airlines, and agents will not be responsible for any act, error, or omission, nor for any injury, loss, accident, delay, inconvenience, irregularity, or damage which may be occasioned by any cause whatsoever, including acts of nature, civil disturbance, government restrictions, or failure of any means of conveyance to adhere to published schedule.

GE reserves the right at any time, either prior to or after departure, to, in its good-faith discretion, change or reprice any tour, trip, or expedition. This includes, but is not limited to, the right of GE alters or omits any part of the itinerary, to substitute hotels or leaders, or to change any means of conveyance without notice and without allowance of refund, with the liability for increased costs---if any---to be borne by trip members.

If GE decides to cancel any tours due to acts of insurrection, strikes, acts of God, or any other cause beyond the control of GE, refunds will be based upon the difference between the original trip price and the cost of services already provided. GE reserves the right to accept or reject any person as a trip member at any time.

Trip members grant GeoEx express permission to take a photographic record of their trips for promotional and commercial use.

*Participant Responsibility* Trip members assume the responsibility to select/design a trip most appropriate to their physical abilities and interests. Members are responsible for being in sufficiently good health to undertake their trip and may be required to obtain a physician's release to participate in the trip. Members are also responsible for studying all pre-departure information; for bringing all detailed equipment and clothing; for conforming to standards of personal hygiene to minimize the risk of traveler's disease---as set by the trip leader; for acting in a manner considerate of fellow group members and the countries visited. Smoking is not permitted in buses, cars, below decks on our boats, tented camps, and other designated non-smoking areas.

*Airline Responsibility* The airlines concerned are not to be held responsible for any act, omission, or event during the time passenger is not on board their planes or conveyances. The passenger contract in use by the airline concerned, when issued, shall constitute the sole contract between the airline and the purchaser of their programs and/or passenger. Similar responsibility as noted above applies to all types of carriers.

*GEOGRAPHIC EXPEDITIONS*  
1008 General Kennedy Avenue  
P. O. Box 29902  
San Francisco, CA 94129  
Tel: (415) 929-0550  
Fax: 415-346-5535  
Email: [esther@geoex.com](mailto:esther@geoex.com)

*CITY COLLEGE OF SAN FRANCISCO*  
Study Abroad Program Office  
50 Phelan Avenue, Box C212  
San Francisco, CA 94112  
Tel: (415) 239-3778/  
Fax: (415) 239-3804  
Email: [studyabroad@ccsf.edu](mailto:studyabroad@ccsf.edu)

