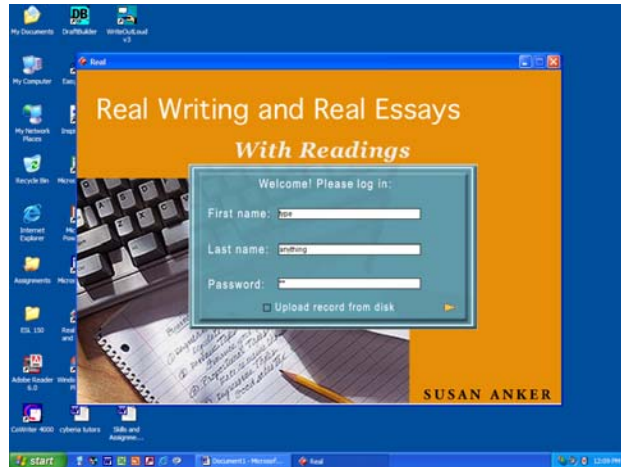
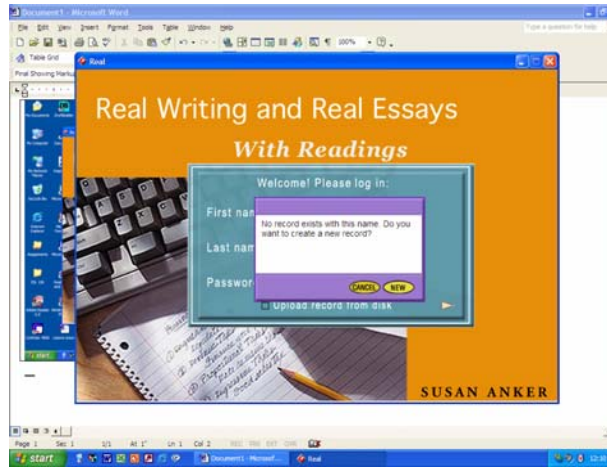


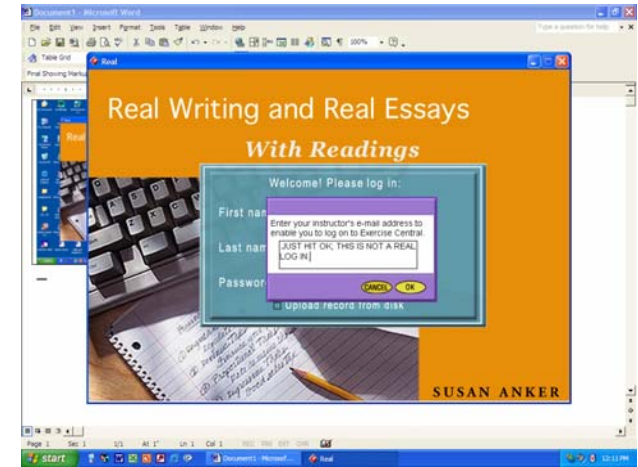
Logging into the Writing Guide and Writing First Programs



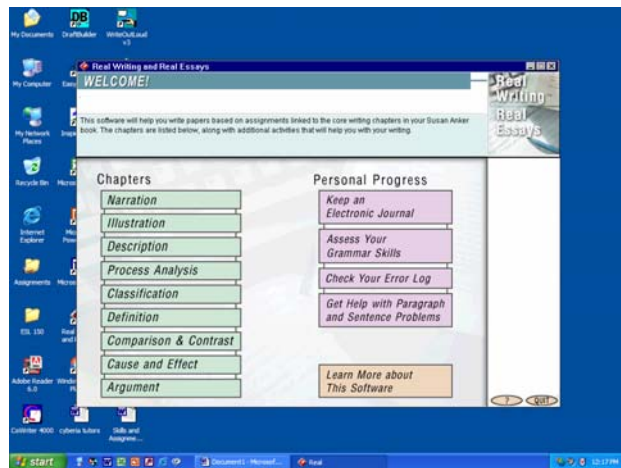
1--This is not a real log in, so you do not have to type a legitimate name and password. This program is not part of a network.



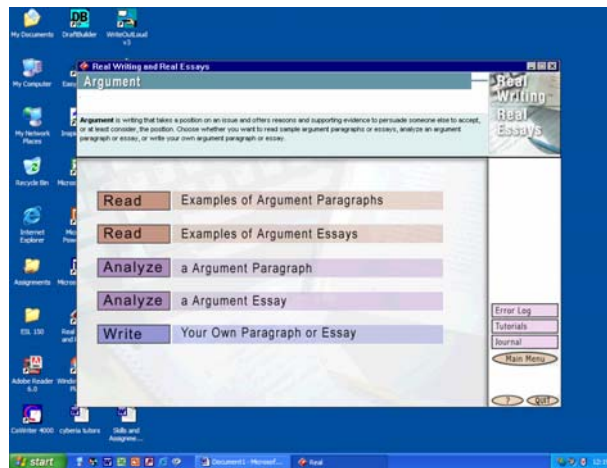
2--Simply click "New."



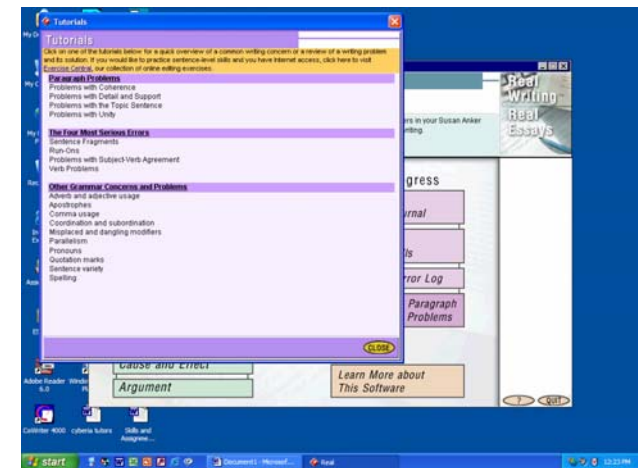
3--Just Click "OK" and continue to do so until you reach the Writing Guide's main page.



4--The Main Page: modal activities, grammar diagnostic, error log, paragraph- and sentence-level help...



5--Click "Argument," for example, and jump to reading and writing activities, including annotation and writing process programs.



6--CLICK RETURN TO MAIN MENU and work on paragraph and sentence-level needs. Follow the steps and keep track of what you've done.