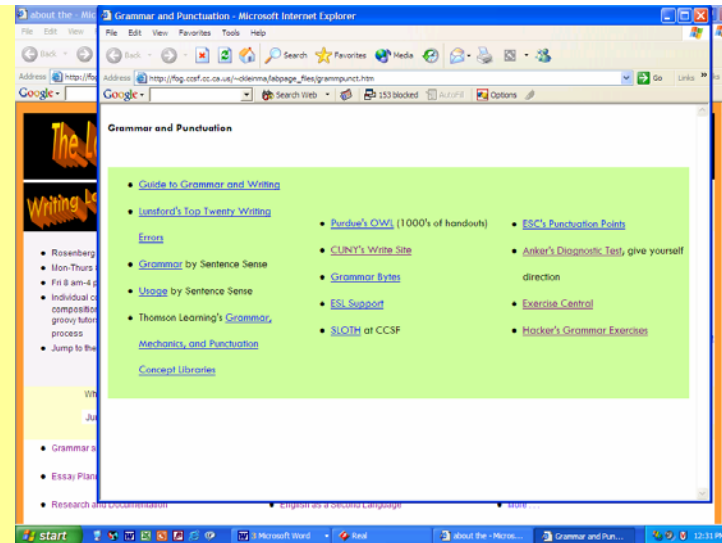
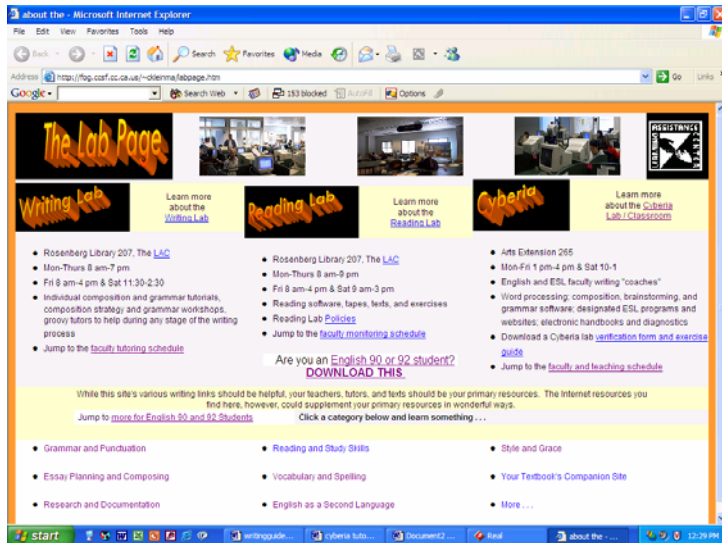
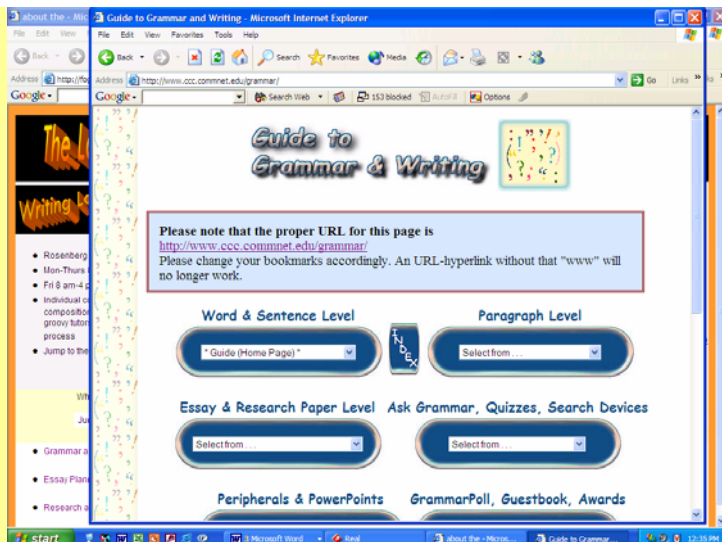


Grammar guides and exercises by way of The Lab Page . . .

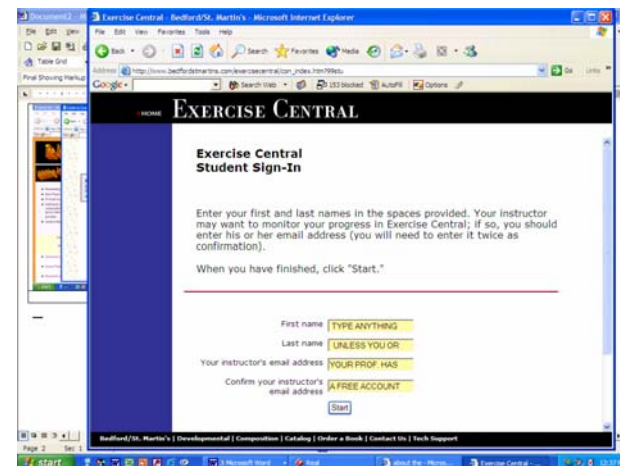


1--Go to THE LAB PAGE, where you will find all sorts of CCSF lab information, and jump to your needed web resources, perhaps in "Grammar and Punctuation." (Note—The Lab Page may look a bit different than it does in this guide.)

2--There are many grammar and punctuation resources on the web. For thorough explanations and PowerPoint slideshows, jump to the Guide to Grammar and Writing. For wonderful grammar, punctuation, and style exercises that generate immediate feedback, jump to Exercise Central.



3--The Grammar Guide is great for all levels, and many of its quizzes are quite challenging. Check out the PowerPoint shows and take advantage of the INDEX if drop down menus bother you.



4--It's good for teachers and students to set up free accounts with Bedford so that work may be stored and tracked. However, one may bluff through the log-in simply by typing anything for first and last name and then hitting "start."