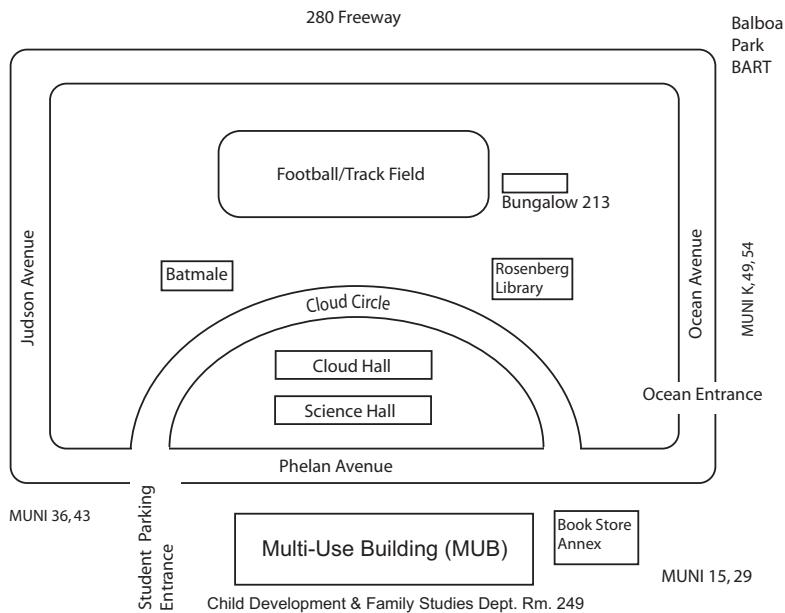


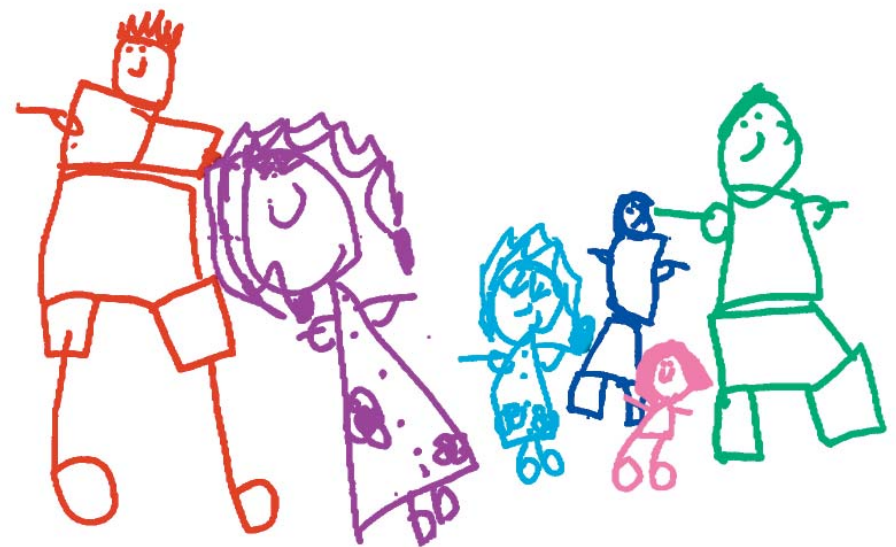
THE SAN FRANCISCO EARLY CHILDHOOD PROFESSIONAL DEVELOPMENT PROJECT

San Francisco Early Childhood Professional Development Project (PDP) is located at City College of San Francisco Ocean Campus, in the Multi-use building on the second floor. CCSF is easily reached from the Balboa Park Bart station, from Route 280, and from Muni Lines K, 15, 29, 36, 43, 49, and 54.



Child Development & Family Studies Dept.
City College of San Francisco
50 Phelan Avenue, MU247, San Francisco 94112
415-452-5605
FAX: 415-452-5611
www.ccsf.edu/cdev
www.sfchildnet.org

Thinking About A Career Working With Young Children?



THE SAN FRANCISCO EARLY CHILDHOOD PROFESSIONAL DEVELOPMENT PROJECT

City College of San Francisco
Child Development & Family Studies Department
50 Phelan Avenue, Multi-Use Building (MUB) Room 249
San Francisco, CA 94112
415.452.5605
www.ccsf.edu/cdev
www.sfchildnet.org

If You Are _____

- Considering a career working with young children
- Seeking information about job options or educational requirements
- Looking for a job in early care and education
- Applying for a California Child Development Permit

The Multi-Use Building _____

On the Ocean Campus, Room 249 is open Monday through Friday with additional evening hours on Monday and Tuesday during Fall and Spring Semesters.

Services are available in:

- English
- Cantonese
- Spanish
- Mandarin
- Vietnamese

and are located at a variety of community sites in the Mission, Chinatown/NorthBeach, the Tenderloin, the Bayview and Visitacion Valley.

For an appointment, call (415) 452-5605

The Early Childhood Professional Development Project (PDP) is a program of the Child Development and Family Studies Department and is funded by a generous grant from the Mimi and Peter Haas Fund, and SF CARES

THE SAN FRANCISCO EARLY CHILDHOOD PROFESSIONAL DEVELOPMENT PROJECT (PDP) _____

PDP supports the professional development of members of the early childhood workforce through the following activities

- Career Advising and Academic Counseling as ongoing support for students interested in the field of Child Development
- Child Development Permit advice and application processing assistance
- Support to SF CARES a program that rewards retention and continuing education.
- Transfer Assistance for students seeking transfer to a B.A. program, particularly at San Francisco State University.
- Annual Career Fair during the Week of the Young Child as a forum for transfer, job seekers and employers
- Outreach and recruitment to the field of Early Care and Education, especially in communities underrepresented in the early childhood workforce
- Professional Development Web Site providing current information on all aspects of the Project: www.sfchildnet.org

or on the Child Development Department website at www.ccsf.edu/cdev

